

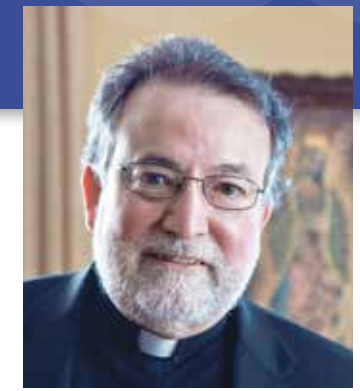
The Catholic Foundation
of the DIOCESE of SACRAMENTO, INC.



2014
annual
REPORT



Furthering **the work** of the Lord Jesus »



Dear Brothers and Sisters in Christ,

The Holy Father, Pope Francis, has invited us to enter more deeply into the mystery of God’s divine mercy revealed in the Sacred Heart of Jesus.

The Jubilee Year of Mercy provides us the occasion to recognize how we are saved by the merciful hand of Jesus, pierced for our sake, as well as consider the manner by which we extend this same saving mercy to others.

The heart of the Catholic Foundation is the Sacred Heart of Jesus. His wisdom and charity inspire all the many works supported by the Foundation. I hope the accompanying report will convey both the careful stewardship of this Catholic legacy as well as the gospel joy with which it is shared for the greater glory of God.

Respectfully,

+Jaime Soto
Bishop of Sacramento

CONTENTS

Building a vibrant future	2
Growing the Annual Catholic Appeal	4
Funds & endowments at work	6
Ways to give	10
Audited financial statements	12
Board of Directors	back

Building a vibrant and successful future »



Lay Formation & Youth Ministry
\$9.5 million

ENDOWMENT FOR
Lay Formation
\$1.2 million

Nurturing spirituality

ONE Lay Formation Funds will help to underwrite the cost of certifying an additional 400 lay ministry leaders at the basic level and 100 lay ministry leaders at the advanced level over the next five years.

ENDOWMENT FOR
Youth & Young Adult Ministry
\$2.3 million

Youth & young adult ministry coordinator/region

The ONE Regional Youth & Young Adult Ministry Fund will support three Regional Coordinator positions to work one-on-one with parish staffs, host collaborative regional events and promote the creation of additional paid youth ministry positions.

Newman Centers & Programs
\$3.5 million

Home away from home

The ONE Campus Ministry Fund will address the needs of our three Newman Centers to ensure our college-aged community has a place to worship and mentors who will guide them when they are away from home.

Camp Colfax
\$2.5 million

ONE Camp Colfax Funds will be used to assist in the purchase and renovation of this youth camp and retreat property to ensure expanding participation of youth and young adults at the parish, deanery, regional and diocesan levels.

CAPITAL CAMPAIGN PROGRESS

The ONE Campaign was designed to support and bring Bishop Soto's strategic plan to fruition. This plan focuses on six primary areas of need that are crucial to building a vibrant and successful future for our church — education, youth ministry, pastoral care, communication, service and the parish communities. We are pleased to share with you the ONE expenditure plan for funds committed as of June 30, 2014.



Parish Community
\$4.1 million

The unique needs of each parish are great. This campaign will not only strengthen the entire community, but individual parishes as well.



Communication
\$1.5 million

Radio Santísimo is making the mission of new evangelization a reality in the Diocese of Sacramento.



Service
\$1.35 million

We must support and expand our community's good works and give hope and sustenance to those in need.



Pastoral Care
\$750 thousand

The opportunity for our retired priests to live independently, yet in community, has proven to be a very attractive model.

Education
\$5.8 million

Technology
\$500 thousand

Bringing technology to the classroom
\$15,000/school

Bishop Soto's Strategic Plan calls for every school to be a 1x1 device environment by 2016. With the ONE School Technology Fund, qualifying schools receive grants for this purpose.

ENDOWMENT FOR
Parochial Schools
\$1.5 million

ENDOWMENT FOR
High Schools
\$1 million

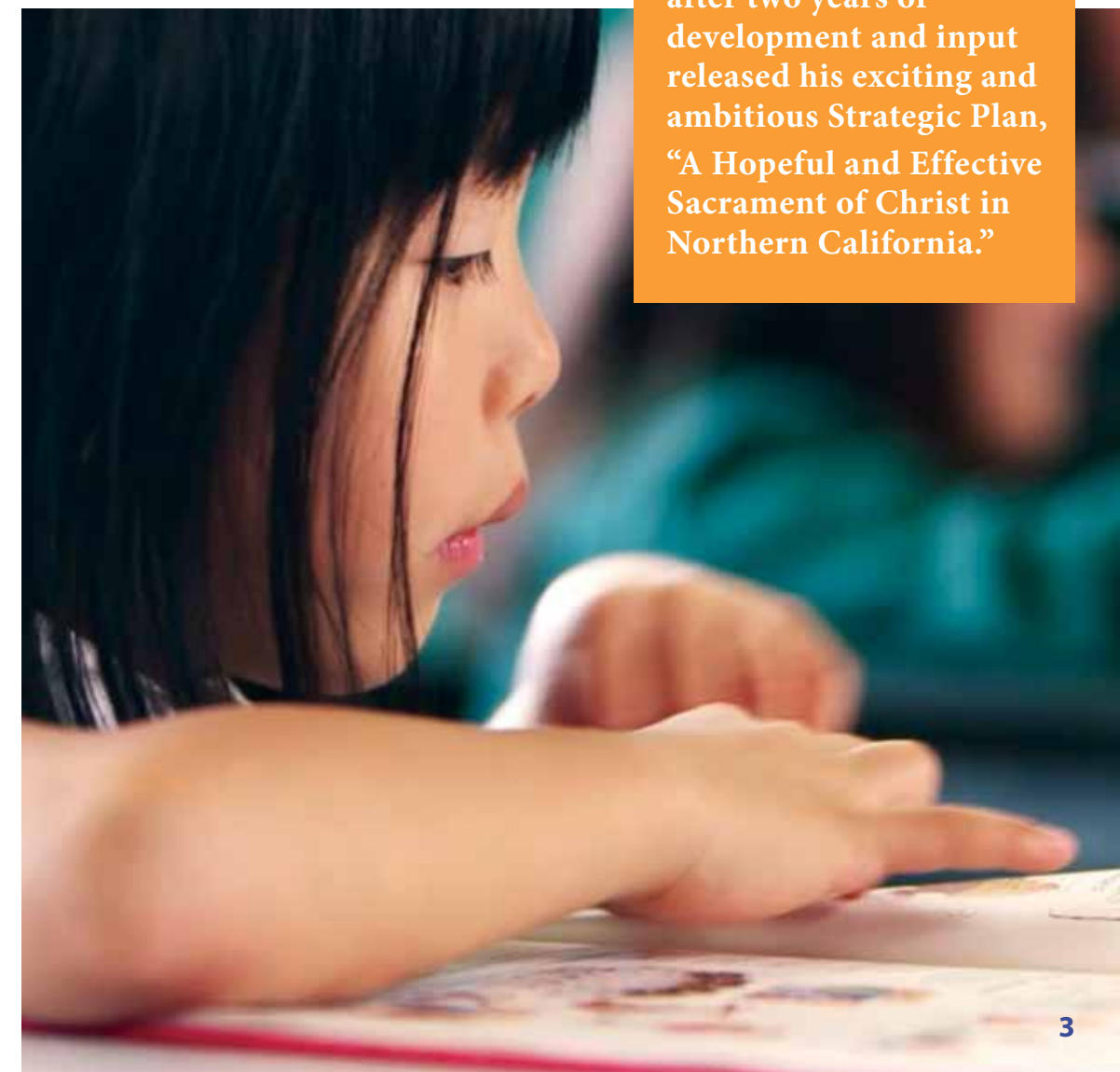
Supporting our school families
\$500–\$2,500 award range

ONE Scholarship Funds will provide financial assistance to help make Catholic school affordable for deserving families who seek financial assistance.

Facilities Improvements
\$2.8 million

ONE Facility Funds will address the specific facility and infrastructure needs of our three diocesan high schools and the SUCCEED elementary school campuses.

In 2012, The Most Reverend Jaime Soto, after two years of development and input released his exciting and ambitious Strategic Plan, "A Hopeful and Effective Sacrament of Christ in Northern California."





Assisting people in need

120,000 PEOPLE

WERE HELPED BY PROGRAMS RECEIVING FUNDS FROM THE ANNUAL CATHOLIC APPEAL

Growing the Annual Catholic Appeal »

2014 ANNUAL CATHOLIC APPEAL

*I was **A STRANGER** and you took me in.*

Maye was born in a Thai refugee camp. Her family later immigrated to Sacramento. As a 9-year-old child she faced overwhelming responsibility as the only English speaking member of her Mien community. She was comforted and inspired by the staff at Wellspring Women's Center. Today she holds a Master's Degree from Columbia University and helps others through her work with U.S. International agencies.



"I am filled with joy, hope and gratitude when I see the marvelous work being done for those in need by Catholic Charities and its partner organizations."

- Sister Catherine Connell, SSS
Co-founder, Wellspring Women's Center, Sacramento

\$2.97 million pledged by more than 19,000 parishioners



A program of The Catholic Foundation, the Annual Catholic Appeal is our annual tradition that connects us to those who need our help. The Foundation is focused on growing the potential of the Appeal.

50% of proceeds helped a vibrant network of Catholic social service agencies extend the hand of Christ to those who are lost and alone.



25% of proceeds helped families in our most at-risk communities with tuition assistance so their children could remain in Catholic school; and helped seminarians devote themselves fully to their studies as they prepare to serve as priests in our diocese.



25% helped 102 parishes respond to local needs.

"Every time a child finds safety and hope, a family has a breakthrough, a marginalized person rebuilds a life of dignity, a seminarian moves closer to ordination, or a student is able to stay in Catholic school, we are thankful for those who give to the Annual Catholic Appeal."

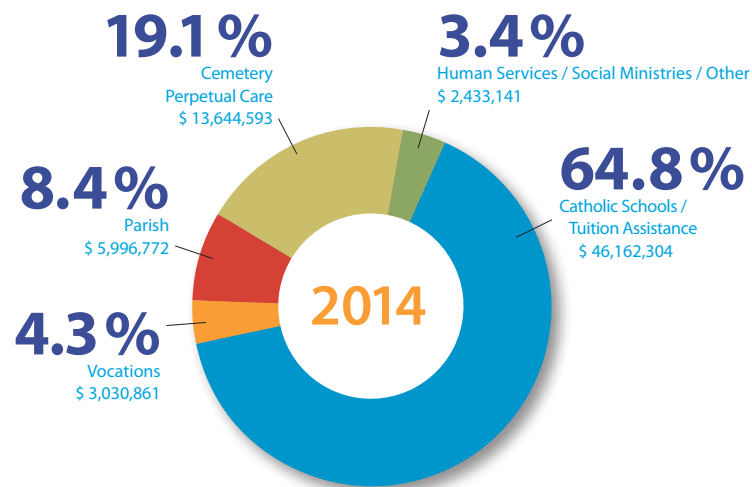
- Rev. Roy Donor
2014 Chair

Funds & endowments at work »

The Catholic Foundation practices Christian stewardship by managing individual endowment funds for the benefit of parishes, schools and agencies in the Diocese of Sacramento.

MAJOR FUNCTIONS OF THE FOUNDATION

- Fund Development** to support the Bishop's Strategic Plan
- Parish Services** to support parish financial goals
- Community Outreach** to build donor, government, board and media relations
- Impact Reporting** to communicate results, accomplishments, and accountability



Each year, an endowment's earnings are used to help finance the specific purpose for which it was created.

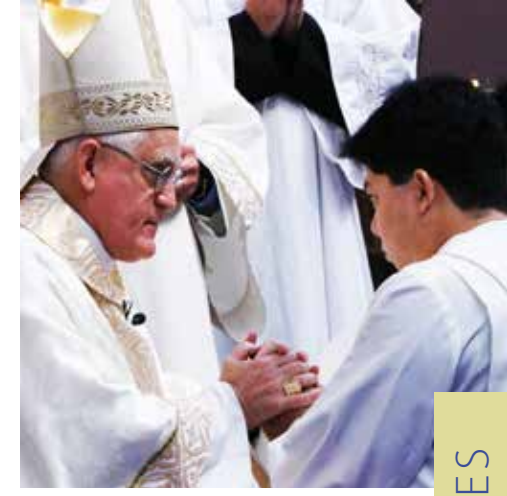


Camp ReCreation Endowment »

Camp ReCreation has been serving people with developmental disabilities since 1983. Each year, the camp provides three weeks of residential summer camp and engaging year-round activities that inspire fun, social interaction and spiritual growth – all while creating valuable respite for parents and caregivers. Camp ReCreation also strives to increase awareness and acceptance of persons with developmental disabilities in the greater community. ♦

Camp ReCreation is under the patronage of the Diocese of Sacramento and supported by the Knights of Columbus and many other individuals and organizations. In 1999, the Camp ReCreation Endowment Fund was established to help secure the longevity of the programs and ensure continued opportunities for future campers.

“Camp ReCreation is made possible only by the generous support of our donors.”
– Kathi Barber, Director



Bishop William K. Weigand Seminarian Endowment »

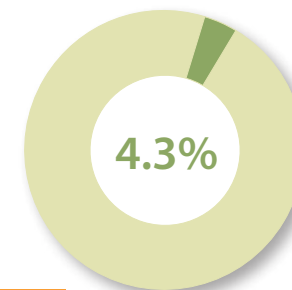
Recruiting seminarians, rebuilding the presbyterate and Hispanic ministry were priorities for Bishop William K. Weigand when he became the eighth Bishop of the Diocese of Sacramento in 1994. It was even more urgent in Sacramento than anywhere else he had served because of the declining number of priests.

“When I arrived, there were only a handful of parishes in the Diocese that offered the Mass and sacraments in Spanish and many communities were divided. We had to plan for a presbyterate that would eventually be totally non-Irish and be from local, Hispanic and Filipino vocations. Today, we have a very diverse presbyterate. We also developed parish committees to recruit more local vocations and brought in priests and sisters from several religious communities.” ♦

**“I am quite pleased as I look back...
...Today, we have a very diverse presbyterate.”**
– Bishop William K. Weigand

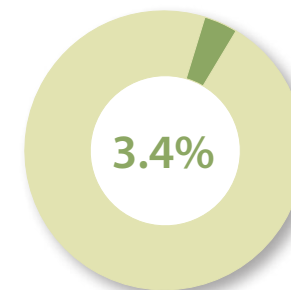
Established in 2007, the Bishop William K. Weigand Seminarian Burse continues to assist with the education and formation of future priests for the Diocese of Sacramento. Thanks to his vision and generosity, we have a permanent resource to support such a critically important ministry to the future of our diocese.

\$ 3.03 million



VOCATIONS ENDOWMENTS

- » Bishop William K. Weigand Seminarian Endowment
- Catherine and Patrick Dunning Memorial Fund
- Charles E. Anderson Seminarian Endowment
- Cottle Endowment
- Fred W. Lammerding Seminarian Education Endowment
- Helen R. Hogan Seminarian Education Endowment
- Holy Family Parish Religious Vocations Endowment
- Joe and Edna Fisher Seminarian Endowment
- Mary Luddy Seminarian Education Endowment
- Preserving our Past Building our Future Scholarship Endowment for Seminarian Education
- Priestly Vocations Endowment
- William H. Farrell Seminarian Endowment



\$ 2.43 million

HUMAN SERVICES / SOCIAL MINISTRIES / OTHER

- » Camp ReCreation Endowment
- Helena St. Louis Endowment
- Oxnard Sprague Mass Intentions Endowment
- Poverello Endowment for Social Programs
- Preserving Our Past, Building Our Future Social Services Endowment
- The Meuser Family Donor Advised Fund
- The Social Services Fund

“We are grateful for funds like the Everett O’Rourke Scholarship Endowment. Students with the desire, but not the means to attend Catholic High School have been given a remarkable gift.”

-David Perry, President
St. Patrick - St. Vincent High School Vallejo



Funds & endowments at work »

64.8%

\$ 46.1 million

CATHOLIC SCHOOLS / TUITION ASSISTANCE ENDOWMENTS

A.G. Kassis Family Scholarship Endowment for High Schools
Apostle of Sacred Heart of Jesus, St. Charles, Sacramento
Believe / Catholic Schools Scholarship Endowment
Bishop Quinn Catholic Center Endowments
Bishop Quinn Catholic Center Alan De’Tourney Music Endowment
Bishop Quinn Catholic Center Maintenance Endowment
Burleigh Scholarship Fund, St. Thomas More, Paradise
Charles and Helen Schwab Foundation Fund
Charlotte Mae Church Memorial Scholarship Fund, St. Robert School, Sacramento
Donald W. “Bill” Littlejohn Scholarship Fund, Colusa
Edward L. Lammerding Scholarship
Edward & Vera Langen Scholarship Endowment
Everett V. O’Rourke Scholarship Endowment for High Schools
Greenleaf Scholarship Fund, St. Patrick / St. Vincent High School

Hansen Tuition Assistance Fund, Holy Rosary School, Woodland
Helen Faulkner Scholarship Fund, Mercy High School, Red Bluff
Ima Stoll Scholarship Trust
Isabel Dinelli Cristo Rey Scholarship Fund
Isabel Dinelli Scholarship Fund
John J. Looser Estate Scholarship
John Robert Keane Memorial Scholarship Endowment
Lornelle P. McKenna-Faulkner Endowment
Mary Van Geffen Scholarship, Notre Dame, Marysville
Maurice Dixon Scholarship Memorial Endowment for SUCCEED Schools
Mercy High School Scholarship Endowment
Merle A. Webb Endowment, Notre Dame School, Chico
Mt. St. Mary School Endowment
Mt. St. Mary School Scholarship

Mt. St. Mary School, Single Parent Scholarship Endowment
Nancy E. Murray-Waechter Scholarship Fund, St. Thomas, Oroville
Natalie Marie Giorgi Scholarship Fund
Nellie J. Schrader Scholarship Fund
Philip Henery DesRoches Fund
Preserving our Past Building our Future Scholarship Endowment for Catholic Schools
Preserving our Past Building our Future Scholarship Endowment for Religious Education and Lay Ministry
Raymond J. Spingall College Scholarship Fund
Richard & Nancy Quinn Scholarship, Notre Dame School, Vacaville
Richard J. Lee Memorial Scholarship Fund
Ring Scholarship Fund, Sacred Heart School, Sacramento
Robert L. Ruffan Endowment Fund, St. Patrick – St. Vincent High School

Rosemary Trainor Bradley Memorial Scholarship Award
St. Angela Merici Scholarship Fund
St. Francis High School Endowment
St. Patrick-St. Vincent High School Endowment
St. Patrick-St. Vincent High School Memorial Scholarship Fund
SUCCEED Schools Endowment Fund
The Leandro and Mary Tirapelle Scholarship Fund
Thomas & Beverly Burke Endowment Fund, St. Patrick – St. Vincent High School
Thomas N. Burke Class of 1954, St. Basil, Vallejo
Timothy Grover Memorial Scholarship, St. John Notre Dame School, Folsom
Vliet Scholarship Endowment for College
William Randolph Hearst Small and Rural School Endowment
and 43 funds and endowments established by parishes to benefit their parish school



CATHOLIC SCHOOLS / TUITION ASSISTANCE



Everett V. O’Rourke Scholarship Endowment for High Schools

Established in 1987, the endowment was created in memory of Everett O’Rourke for his many years of service to Catholic education in our diocese.

To be considered, the student’s family must exhibit a need for financial aid and the student must prove academic excellence and service to the community.

Angelina, a 2014-15 recipient wrote: “Often I am bombarded by media and a society that have lost respect for family and faith. Catholic education strengthens the value of family and faith.” She continues: “A Catholic education prepares students to be good stewards of God’s

gifts and active people of faith who serve others, make a difference in the world, and participate in our faith. This faith-filled environment instills high degrees of self-confidence, self-respect, and self-discipline among students.”

Thanks to O’Rourke Scholarship funds, Angelina has been able to continue her Catholic education in the faith-filled environment of St. Patrick-St. Vincent High School in Vallejo. ♦

“I am able to grow in an environment where dependence on God and prayer are encouraged.”

- Angelina
Everett O’Rourke
Scholarship Recipient



Ways to give »

“I can’t think of a better place to donate my money. The parish has meant so much to me for so many years.”

– Robert Reel
Holy Rosary Parish,
Woodland



CREATING A CHARITABLE GIFT ANNUITY

Robert Reel creates a legacy of gratitude to Holy Rosary Parish

Ask Robert Reel what he’s most grateful for over his lifetime, and without hesitation “my choice to become Catholic.”

“I went to Holy Rosary Church with my wife, Marie, and decided to become Catholic. I’ve never regretted it.” Robert was baptized in the 1970s. “Being Catholic and a member of Holy Rosary has

meant a lot to me over the years,” Robert says. “I really don’t know how to fully explain it. I wouldn’t miss coming to Mass for anything. It’s made me a different person.”

“The parish is thrilled to receive such a significant financial contribution.”

– Father Jonathan Molina
Pastor, Holy Rosary

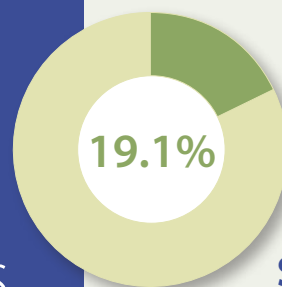
Marie died two years ago. When Robert heard about the CGA program for those 65 and older being offered by The Catholic Foundation, he donated \$200,000 of his savings as a way to give back for his four joyful decades at the parish. With the annuity, he receives lifetime income for himself in the form of a monthly stipend, and also creates a legacy. Upon his death, his donation will benefit the many ministries of Holy Rosary. ♦



Donors and financial advisors may choose from a variety of ways to achieve philanthropic goals

TYPE OF GIFT	FORM OF GIFT	POTENTIAL BENEFIT TO YOU – THE DONOR	BENEFIT TO FOUNDATION MINISTRIES
Outright Gift: Unrestricted	• Cash • Stock/Securities • Insurance • Real Estate • Personal Property, etc.	• Charitable tax deduction • Avoidance of capital gains tax • Opportunity to make a gift to a designated ministry(ies)	• Immediate benefit to ministry(ies) of donor choosing (or Foundation may choose if unrestricted)
Outright Gift: Endowment	• Cash • Stock/Securities • Insurance • Real Estate • Personal Property, etc.	• Charitable tax deduction • Avoidance of capital gains tax • Opportunity to make a gift to a designated ministry(ies) • Honor a loved one	• Ongoing support to donor designated ministry(ies) • Opportunity for beneficiaries to participate in philanthropy
Charitable Gift Annuity <i>\$10,000 minimum contribution</i>	• Cash • Stock/Securities	• Guaranteed cash flow for life at rates higher than bank CDs • Portion of cash flow is tax-free • Charitable tax deduction plus possible reduction of taxable estate	• Upon end of donor life or end of contract, remaining assets support parish, school or designated ministry(ies)
Donor Advised Fund <i>\$5,000 minimum contribution</i>	• Cash • Stock/Securities • Insurance	• Donor recommends recipient ministries • Advice in determining appropriate ministry(ies) • Charitable tax deduction, reduction of taxable estate	• The Foundation receives gift for immediate and future use • Opportunity for beneficiaries to participate in philanthropy
Charitable Remainder Trust	• Cash • Stock/Securities • Real Estate • Any appreciated property	• Donor receives income stream • Charitable tax deduction • Reduction of taxable estate, plus avoidance of capital gains tax	• Upon end of donor life, remaining trust assets support designated ministry(ies)
Bequest: In Will or Trust	• Cash • Stock/Securities • Personal Property, etc. • Percentage of estate • Remainder of estate	• Reduction of taxable estate • Create legacy honoring a loved one • Opportunity to designate ministry(ies)	• Funds designated ministry(ies) (or Foundation may choose if unrestricted)
Life Insurance	• Name the Foundation as policy owner and/or beneficiary	• Future gift at manageable cost • Charitable tax deduction	• The Foundation receives full face value of policy upon death of the donor, or current surrender value
Retirement Plan / IRA / Annuity	• Name the Foundation as beneficiary	• Donor maintains control during life, avoids tax at death • Opportunity to designate ministry(ies)	• Upon end of donor life, immediate support of Foundation ministry(ies)

More funds & endowments at work »



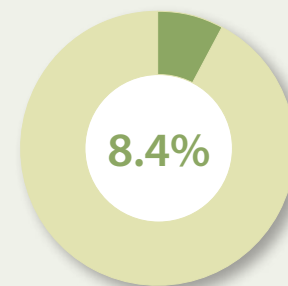
Cemetery Perpetual Care Funds and Parish Endowments provide for maintenance of facilities and programs.

\$ 13.6 million

CEMETERY PERPETUAL CARE FUNDS

- Department of Cemeteries Endowment Fund
- Department of Cemeteries Veterans Endowment Fund
- St. Joseph’s Cemetery, Redding
- St. Patrick’s Cemetery, Placerville

\$ 5.9 million



PARISH ENDOWMENTS

- Fr. Michael J. Dillon Scholarship, Rocklin
- Garland and Veronica Frizzie Endowment, St. Joseph Parish, Sacramento
- Mary B. Allen Trust Endowment, Sacred Heart Parish, Gridley
- Marya Welch-Memorial Hall Endowment, St. James Parish, Davis
- Richard Lambert Trust, St. John the Baptist Parish, Chico
- Sacred Heart Parish Endowment, Red Bluff
- St. Francis of Assisi Parish Endowment, Sacramento
- St. James Parish Endowment, Davis

- St. Joseph Parish Endowment, Elk Grove
- St. Joseph Parish Endowment, Redding
- St. Rose Parish Education Endowment, Roseville
- St. Therese Parish Endowment, Isleton
- St. Vincent Ferrer Parish Endowment, Vallejo
- William and Marijane Adams Endowment, Queen of the Snows Parish, Tahoe City

2013-14 Audited Financial Statements »

YEARS ENDED DECEMBER 31, 2014 & 2013

Financial Position

ASSETS

	2014	2013
Current Assets:		
Cash and Cash Equivalents	\$ 348,257	\$ 681,838
Accounts Receivable	1,017	—
Total Current Assets	349,274	681,838
Investments	71,057,277	68,701,880
Total Assets	\$ 71,406,551	\$ 69,383,718

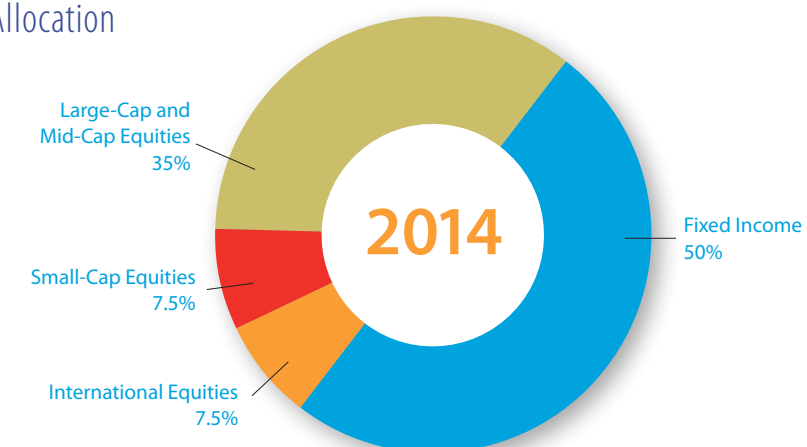
LIABILITIES AND NET ASSETS

	2014	2013
Current Liabilities:		
Accounts Payable	\$ 138,880	\$ 120,283
Long-term Liabilities:		
Endowments Held for Others	61,521,353	59,564,291
Total Liabilities	61,660,233	59,684,574
Net Assets:		
Unrestricted	6,482	—
Temporarily Restricted	2,050,368	2,045,663
Permanently Restricted	7,689,468	7,653,481
Total Net Assets	9,746,318	9,699,144
Total Liabilities and Net Assets	\$ 71,406,551	\$ 69,383,718

Activities

	2014			2013
	Unrestricted	Temporarily Restricted	Permanently Restricted	
Revenue and Reclassifications:				
Endowment Contributions	\$ —	\$ —	\$ 35,987	\$ 35,987
Other Contributions	—	28,269	—	28,269
Net Investment Income	—	516,100	—	516,100
Management Fee Revenue	428,039	—	—	428,039
Net Assets Released from Restrictions	539,664	(539,664)	—	—
Total Revenue and Reclassifications	967,703	4,705	35,987	1,008,395
Expenses:				
Administrative and Financial Services Fee	488,303	—	—	488,303
Distributions and Grants	472,918	—	—	472,918
Total Expenses	961,221	—	—	984,742
Change In Net Assets	6,482	4,705	35,987	47,174
Net Assets, Beginning of Year	—	2,045,663	7,653,481	9,699,144
Net Assets, End of Year	\$ 6,482	\$ 2,050,368	\$ 7,689,468	\$ 9,746,318

Target Asset Allocation



The Catholic Foundation

of the DIOCESE of SACRAMENTO, INC.

MISSION

To witness to Christ and His Gospel values of love, justice, forgiveness and service to all by ensuring that financial donors can effectively support the well-being of Catholic works in our diocese.

Board of Directors

CHAIRMAN

Most Rev. Jaime Soto

PRESIDENT

Mr. Kelly Brothers
Financial Advisor and Partner
Genovese, Burford and Brothers

VICE PRESIDENT

Mr. Thomas C. Meuser
Retired

TREASURER

Mr. Thomas J. McNamara
Chief Financial Officer
Diocese of Sacramento

Mr. Daniel J. Cairns, CFP®, CIMA®
Senior Vice President
The Cairns & Kay Group of
R. W. Baird & Co.

Most Rev. Myron J. Cotta
Vicar General & Auxiliary Bishop
of Sacramento
Diocese of Sacramento

Mrs. Jane Flynn
Owner
Pacific Farms and Orchards

Mr. Lawrence B. Garcia, Esq.
Senior Counsel
Kronick Moskowitz Tiedemann & Girard

Mrs. Ann Gonzalez Kramer
President
Kramer and Associates

Mrs. Sandy Malaney
Co-Founder, CEO
Big Hairy Dog Information Systems

Mr. John McGinness
President & CEO
McGinness Communications Solutions

Ms. Beth Mullen, CPA
CPA, Partner, National Director –
Affordable Housing Industry
CohnReznick LLP

Ms. Kathy Pescetti
President
Admail West

Mr. Terence J. Street
President
Street Consulting



Services

Annual Catholic Appeal | Parish capital campaign assistance
Parish school development support | Parish stewardship resources
Planned and major giving support

Staff

Mrs. Sharon Caporusso
Executive Director

Mrs. Chantal LeFevre
Associate Director

Mr. Abe Saadeh
Chief Development Officer

Mrs. Bianka Torres
Administrative Assistant

916.733.0266 | www.tcfsac.org
P.O. BOX 189400 | SACRAMENTO, CA 95818-9400

The Catholic Foundation of the Diocese of Sacramento, Inc. is a California Nonprofit Religious Corporation organized as a supporting organization to the Roman Catholic Bishop of Sacramento, A Corporation Sole, within the meaning of Internal Revenue Code section 509(a)(3).