



2013
ANNUAL
REPORT

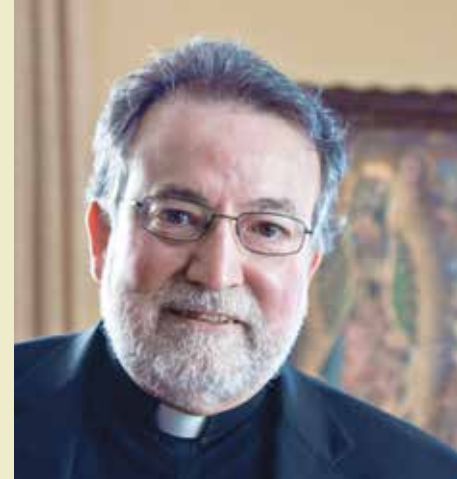
ACTION

ENGAGEMENT

ACCOUNTABILITY

GROWTH

The Catholic Foundation
of the DIOCESE of SACRAMENTO, INC.



BISHOP'S MESSAGE

DEAR BROTHERS AND SISTERS IN CHRIST,

THE HOLY FATHER, POPE FRANCIS, reminded all of us this past year that the gospel of Jesus is *Evangelii Gaudium*, a gospel of joy. In his apostolic exhortation he invites us to experience of joy of knowing the Lord Jesus as well as the joy of bringing others to meet the same Lord.

The 2013 Annual Report for the Catholic Foundation of the Diocese of Sacramento elaborates the good work of the Foundation board members and staff. They are good stewards of the abundant blessings God has given us as well as the many sacrifices you have made. Together we are using these resources to bring the joy of gospel into the world.

I am grateful for the successful outcome of the Diocesan ONE Campaign. The many gifts will strengthen the work of the Catholic Church in Northern California. May the Lord Jesus bless our humble efforts with his amazing grace. May the Holy Spirit continually renew our hearts with fire of divine charity. May the Father of mercy look kindly on us and make His joy in us complete.

Respectfully,

+ Jaime Soto
Bishop of Sacramento



CONTENTS

Capital Campaign	2
Annual Catholic Appeal	5
Parish Support	6
Fund Development	7
Funds & Endowments	8
Financials, Ways to Give	10-12

WE ARE TRULY ONE

GIVE
\$50 MILLION

SERVE
5 MILLION HOURS

PRAY
5 MILLION HOURS

BUILDING A VIBRANT FUTURE

CAPITAL CAMPAIGN

The Catholic Foundation serves as a catalyst for bringing together the essential financial resources to build and sustain the work of the Catholic Church in the Diocese of Sacramento.



FUND DEVELOPMENT
to support the Bishop's Strategic Plan

PARISH SERVICES
to support financial goals at the parish level

COMMUNITY OUTREACH
to build donor, government, board and media relations

IMPACT REPORTING
to communicate results, accomplishments, and accountability

BISHOP SOTO'S STRATEGIC PLAN MOVES FORWARD

IN 2013, THE ONE CAMPAIGN, a major campaign to raise funds, service and faith formation hours, began its invitation to parishioners throughout the Diocese of Sacramento to join together to strengthen and revitalize the work of the Church in Northern California.

Informed by the 2001-2 study that surveyed the priorities of nearly 65,000 responding parishioners throughout the Diocese, and the subsequent Diocesan Synod (both efforts undertaken by Bishop William K. Weigand), the Most Reverend Jaime Soto, after two years of strategic development and further input from parishes, released his Strategic Plan. The exciting and ambitious plan, "A Hopeful and Effective Sacrament of Christ in Northern California," addressed diocesan priorities in 2012.



EDUCATION
\$15 million
Technology: \$2 million
Catholic Elementary Schools Endowment: \$4 million
Catholic High School Scholarships: \$2.5 million
Facilities: \$6.5 million

YOUTH MINISTRY
\$16 million
Lay Formation: \$2.5 million
Youth Ministry Program Endowment: \$5 million
Newman Centers: \$6 million
Retreat Center: \$2.5 million

PASTORAL CARE
\$1.5 million
Vianney Retirement Village Expansion

COMMUNICATION
\$1.5 million
Radio Santísimo Expansion

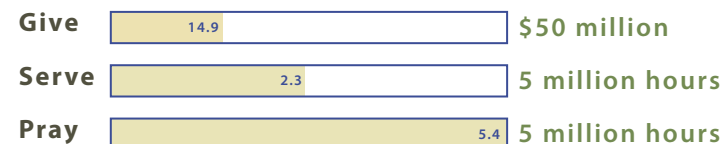
SERVICE
\$3 million
Northern Valley Catholic Social Service: \$1 million
Sacramento Food Bank & Family Services: \$1 million
Catholic Social Service of Solano County: \$1 million

LOCAL PARISH NEEDS
\$11 million



ONE CAMPAIGN

Gifts and Pledges as of January 14, 2014



In the Fall of 2013, 31 of our 102 parishes embarked on The ONE Campaign, generating a total of \$14.9 million from 5,154 participants by January 2014, just 5 months into active campaigning.



2013 Chair
Rev. Francisco Hernandez

2013 ANNUAL CATHOLIC APPEAL

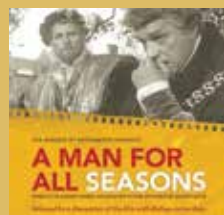
2013 DEBUT:

A UNIQUE AND ENRICHING OPPORTUNITY FOR FAITH FORMATION

IN 2013, BISHOP JAIME SOTO introduced the Catholic Film Series, a unique opportunity for all parishes and parishioners to unite as ONE diocesan community and spend time viewing and discussing compelling films that support our Catholic faith and values.



Celebrating our faith through film



“EVERY TIME A CHILD FINDS SAFETY and hope, a family has a breakthrough, a marginalized person rebuilds a life of dignity, a seminarian moves closer to ordination or a student is able to stay in Catholic school, we are thankful for the nearly 26,000 donors who committed more than \$3.5 million to the 2013 Annual Catholic Appeal.”

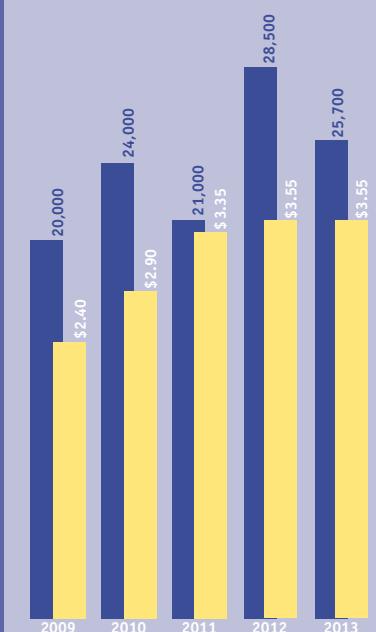
119,000 PEOPLE

WERE HELPED BY PROGRAMS RECEIVING FUNDS FROM THE ANNUAL CATHOLIC APPEAL.

PARISHES USED APPEAL FUNDS FOR LOCAL NEEDS

- 55 emergency help
- 53 feeding the hungry
- 41 St. Vincent De Paul
- 23 tuition assistance
- 19 homeless shelters
- 15 local charities
- 9 services to the unborn
- 6 faith formation
- 5 medical bills
- 4 visiting the imprisoned
- 4 funeral costs

GROWING THE ANNUAL CATHOLIC APPEAL IS A PRIMARY FOCUS OF THE CATHOLIC FOUNDATION.





NEARLY 400 PARENTS, STAFF AND COMMUNITY MEMBERS JOINED THE CELEBRATION AT JESUIT HIGH SCHOOL IN CARMICHAEL.

PARISH SUPPORT

IN 2013, FINANCIAL GOALS AT THE PARISH LEVEL WERE SUPPORTED THROUGH CHARITABLE GIFT ANNUITY (CGA) GIFT PLANS. A VARIETY OF OTHER GIFTS WERE SECURED FOR THE BENEFIT OF OUR PARISHES AND SCHOOLS.

THE NATALIE MARIE GIORGI SCHOLARSHIP FUND

In loving memory of Natalie Marie Giorgi and in honor of the Giorgi family, Our Lady of the Assumption Parish and School, Carmichael CA, proudly announced the "The Natalie Marie Giorgi Scholarship Fund" in 2013. Proceeds from the fund will provide financial assistance to deserving students who attend the parish school.

Details available at <http://fcweb1.faihcatholic.net/digital/Sacramento/CH0114/#?page=14>

ST. ANGELA MERICI SCHOLARSHIP FUND

Established in 2012 to assist families in need due to the death of a parent or guardian of a Catholic school student, over \$9,000 has been disbursed to 8 students of elementary and high school families. This fund is designed to ensure that our students remain in our Catholic schools. Funds provided are intended to help with the cost of tuition for the children.

See page 12 for a full listing of Foundation assisted "Ways to Give."

FUND DEVELOPMENT



We are grateful to our event sponsors:

PLATINUM SPONSORS

The Fitzpatrick Family
Jackson Construction
Pacific Coast Building Products

GOLD SPONSOR

Bank of America

SPEAKER SPONSOR

Big Hairy Dog
Information Systems

SILVER SPONSOR

California Business for
Education Excellence
CTB McGraw-Hill
OfficeMax

**SPECIAL THANKS
TO OUR HOST
JESUIT HIGH SCHOOL**

THE SECOND ANNUAL "CATHOLIC ADVANTAGE CELEBRATION" served as a kickoff to the new school year with a night of dining and entertainment to celebrate all that our Catholic schools have achieved so far and all that they have ahead of them.

This annual Celebration recognizes the many achievements of the students, parents, and staff who make our schools something to be proud of. Proceeds from the evening support a cause we all believe in: providing all of our students with the resources they need for success not only today, but in college and beyond.

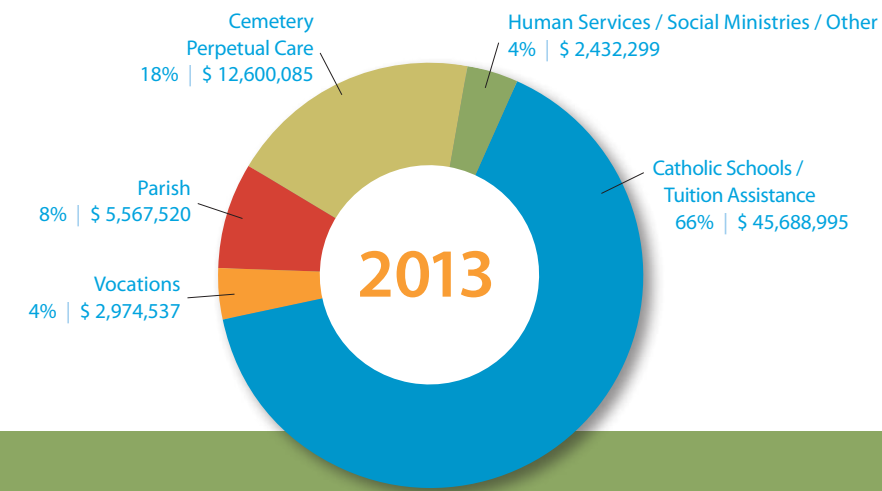
Teachers with more than thirty years' dedication to the ministry of educating students in our diocese were recognized.

Bishop Soto announced the dedication of "The Resurrection Window" at the Cathedral of the Blessed Sacrament, which honors our Irish Priests and their legacy of service.

View a video about the impact of the Irish Clergy on our diocese: youtube.com/tcfsac.



Surprise guest speaker and physics teacher Mr. Jeffrey Wright, is well known at his Louisville Kentucky high school for his antics. Yet his simple and heartfelt message — inspired by his son about the meaning of life, love and family — leaves the greatest impression on his students.



FUNDS & ENDOWMENTS

CATHOLIC SCHOOLS / TUITION ASSISTANCE ENDOWMENTS

A.G. Kassis Family Scholarship Endowment for High Schools
 All Hallows Endowment, Sacramento
 Apostle of Sacred Heart of Jesus, St. Charles, Sacramento
 Believe / Catholic Schools Scholarship Endowment
 Bishop Quinn Catholic Center Endowments
 Bishop Quinn Catholic Center Alan DeTourney Music Endowment
 Bishop Quinn Catholic Center Maintenance Endowment
 Burleigh Scholarship Fund, St. Thomas More, Paradise
 Charles and Helen Schwab Foundation Fund
 Charlotte Mae Church Memorial Scholarship Fund, St. Robert School, Sacramento
 Donald W. "Bill" Littlejohn Scholarship Fund, Colusa
 Edward L. Lammerding Scholarship
 Edward & Vera Langen Scholarship Endowment
 Everett V. O'Rourke Scholarship Endowment for High Schools
 Greenleaf Scholarship Fund, St. Patrick / St. Vincent High School
 Hansen Tuition Assistance Fund, Holy Rosary School, Woodland
 Helen Faulkner Scholarship Fund, Mercy High School, Red Bluff
 Holy Cross School Endowment, West Sacramento
 Holy Family School Endowment, Citrus Heights
 Holy Rosary School Endowment, Woodland
 Holy Spirit School Endowment, Fairfield
 Holy Spirit School Endowment, Sacramento
 Ima Stoll Scholarship Trust
 Immaculate Conception School Endowment, Sacramento
 Isabel Dinelli Cristo Rey Scholarship Fund
 Isabel Dinelli Scholarship Fund
 John J. Looser Estate Scholarship
 John Robert Keane Memorial Scholarship Endowment
 Lornelle P. McKenna-Faulkner Endowment
 Mary Van Geffen Scholarship, Notre Dame, Marysville
 Maurice Dixon Scholarship Memorial Endowment for SUCCEED Schools
 Mercy High School Scholarship Endowment
 Merle A. Webb Endowment, Notre Dame School, Chico
 Mt. St. Mary School Endowment
 Mt. St. Mary School Scholarship
 Mt. St. Mary School, Single Parent Scholarship Endowment

Nancy E. Murray-Waechter Scholarship Fund, St. Thomas, Oroville
 Natalie Marie Giorgi Scholarship Fund
 Nellie J. Schrader Scholarship Fund
 Notre Dame School Endowment, Chico
 Notre Dame School Endowment, Marysville
 Notre Dame School Endowment, Vacaville
 Our Lady of Lourdes School Endowment, Colusa
 Our Lady of the Assumption School Endowment, Carmichael
 Presentation School Endowment, Sacramento
 Preserving our Past Building our Future Scholarship Endowment for Catholic Schools
 Preserving our Past Building our Future Scholarship Endowment for Religious Education and Lay Ministry
 Raymond J. Spingall College Scholarship Fund
 Richard & Nancy Quinn Scholarship, Notre Dame School, Vacaville
 Richard J. Lee Memorial Scholarship Fund
 Ring Scholarship Fund, Sacred Heart School, Sacramento
 Robert L. Rufran Endowment Fund, St. Patrick/St. Vincent High School
 Rosemary Trainor Bradley Memorial Scholarship Award
 Sacred Heart School Endowment, Red Bluff
 Sacred Heart School Foundation Endowment, Sacramento
 SCORE Scholarship Endowment
 St. Angela Merici Scholarship Fund
 St. Anne Endowment, Sacramento
 St. Basil School Endowment, Vallejo
 St. Charles School Endowment, Sacramento
 St. Dominic School Endowment, Benicia
 St. Dominic School Endowment, Benicia, Eggen Family
 St. Francis High School Endowment
 St. Francis of Assisi School Endowment, Sacramento
 St. Ignatius School Endowment, Sacramento
 St. Isidore School Endowment, Yuba City
 St. James School Endowment, Davis
 St. John Notre Dame School Endowment, Folsom
 St. John the Evangelist School Endowment, Carmichael
 St. John Vianney Endowment, Rancho Cordova
 St. Joseph School Endowment, Auburn
 St. Joseph School Endowment, Redding
 St. Joseph School Endowment, Sacramento
 St. Joseph School Scholarship, Redding

St. Lawrence Endowment, North Highlands
 St. Mary's School Endowment, Sacramento
 St. Mel's School Endowments, Fair Oaks
 St. Patrick / St. Vincent High School Endowment
 St. Patrick / St. Vincent High School Memorial Scholarship Fund
 St. Peter Endowment, Sacramento
 St. Philomene School Endowment, Sacramento
 St. Robert School Endowment, Sacramento
 St. Rose School Endowment, Roseville
 St. Theresa Parish School Endowment, South Lake Tahoe
 St. Thomas More School Endowment, Oroville
 St. Thomas More Catholic Education Endowment, Paradise
 St. Vincent Ferrer School Endowment, Vallejo
 St. Vincent Ferrer School Library and Scholarship, Vallejo
 SUCCEED Schools Endowment Fund
 The Leandro and Mary Tirapelle Scholarship Fund
 Thomas & Beverly Burke Endowment Fund, St. Patrick / St. Vincent High School
 Thomas N. Burke Class of 1954, St. Basil, Vallejo
 Timothy Grover Memorial Scholarship, St. John Notre Dame School, Folsom
 Vliet Scholarship Endowment for College
 William Randolph Hearst Small and Rural School Endowment

PARISH ENDOWMENTS

Fr. Michael J. Dillon Scholarship, Rocklin
 Garland and Veronica Frizzie Endowment, St. Joseph Parish, Sacramento
 Mary B. Allen Trust Endowment, Sacred Heart Parish, Gridley
 Marya Welch-Memorial Hall Endowment, St. James Parish, Davis
 Richard Lambert Trust, St. John the Baptist Parish, Chico
 Sacred Heart Parish Endowment, Red Bluff
 St. Francis of Assisi Parish Endowment, Sacramento
 St. James Parish Endowment, Davis
 St. Joseph Parish Endowment, Elk Grove
 St. Joseph Parish Endowment, Redding
 St. Rose Parish Education Endowment, Roseville
 St. Therese Parish Endowment, Isleton
 St. Vincent Ferrer Parish Endowment, Vallejo

William and Marijane Adams Endowment, Queen of the Snows Parish, Tahoe City

VOCATIONS ENDOWMENTS

Bishop William K. Weigand Seminarian Endowment
 Catherine and Patrick Dunning Memorial Fund
 Charles E. Anderson Seminarian Endowment
 Cottle Endowment
 Fred W. Lammerding Seminarian Education Endowment
 Helen R. Hogan Seminarian Education Endowment
 Holy Family Parish Religious Vocations Endowment
 Joe and Edna Fisher Seminarian Endowment
 Mary Luddy Seminarian Education Endowment
 Preserving our Past Building our Future Scholarship Endowment for Seminarian Education
 Priestly Vocations Endowment
 William H. Farrell Seminarian Endowment

HUMAN SERVICES/SOCIAL MINISTRIES/ OTHER

Camp ReCreation Endowment
 Helena St. Louis Endowment
 Oxnard Sprague Mass Intentions Endowment
 Poverello Endowment for Social Programs
 Preserving Our Past, Building Our Future Social Services Endowment
 The Meuser Family Donor Advised Fund
 The Social Services Fund

CEMETERY PERPETUAL CARE FUNDS

Department of Cemeteries Endowment Fund
 Department of Cemeteries Veterans Endowment Fund
 St. Joseph's Cemetery, Redding
 St. Patrick's Cemetery, Placerville

AUDITED FINANCIAL STATEMENTS

FINANCIAL POSITION

ASSETS

	2013	2012
Current Assets:		
Cash and Cash Equivalents	\$ 681,838	\$ 264,255
Accounts Receivable	—	2,750
Total Current Assets	681,838	267,005
Investments	68,701,880	61,849,484
Total Assets	\$ 69,383,718	\$ 62,116,489

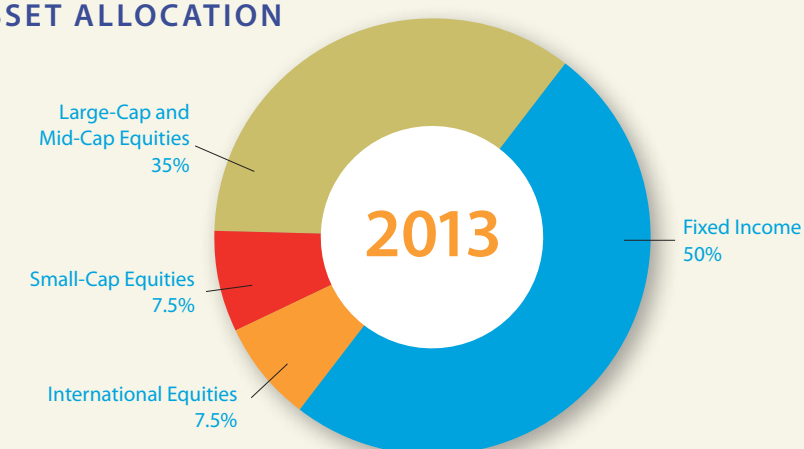
LIABILITIES AND NET ASSETS

	2013	2012
Current Liabilities:		
Accounts Payable	\$ 120,283	\$ 109,426
Other liabilities	—	13,106
Total Current Liabilities	120,283	122,532
Long-term Liabilities:		
Endowments Held for Others	59,564,291	53,263,941
Total Liabilities	59,684,574	53,386,473
Net Assets:		
Temporarily Restricted	2,045,663	1,205,878
Permanently Restricted	7,653,481	7,524,138
Total Net Assets	9,699,144	8,730,016
Total Liabilities and Net Assets	\$ 69,383,718	\$ 62,116,489

ACTIVITIES

	2013				2012
	Unrestricted	Temporarily Restricted	Permanently Restricted	Total	Total
Revenue and Reclassifications:					
Endowment Contributions	\$ —	\$ —	\$ 129,343	\$ 129,343	\$ 70,900
Other Contributions	—	165,179	—	165,179	80,254
Net Investment Income	—	1,261,534	—	1,261,534	893,576
Management Fee Revenue	397,814	—	—	397,814	368,121
Net Assets Released from Restrictions	586,928	(586,928)	—	—	—
Total Revenue and Reclassifications	984,742	839,785	129,343	1,953,870	1,412,851
Expenses:					
Administrative and Financial Services Fee	458,986	—	—	458,986	426,486
Distributions and Grants	525,756	—	—	525,756	375,950
Total Expenses	984,742	—	—	984,742	802,436
Change In Net Assets	—	839,785	129,343	969,128	610,415
Net Assets, Beginning of Year	—	1,205,878	7,524,138	8,730,016	8,119,601
Net Assets, End of Year	\$ —	\$ 2,045,663	\$ 7,653,481	\$ 9,699,144	\$ 8,730,016

TARGET ASSET ALLOCATION





THE CATHOLIC FOUNDATION:

- PERMANENT** - The Catholic Foundation will be here for generations
- EFFICIENT** - Skilled stewards stand ready to bring gifts to fruition
- PROFESSIONAL** - Experienced staff dedicated to shepherding gifts
- CATHOLIC** - Always guided by and true to Catholic principles
- FLEXIBLE** - Many Catholic ministries under one umbrella

THE FOUNDATION WELCOMES THE OPPORTUNITY TO WORK WITH DONORS AND THEIR PROFESSIONAL ADVISORS TO ACHIEVE THE DONOR'S INDIVIDUAL PHILANTHROPIC GOALS.

WAYS TO GIVE

FROM THE EXECUTIVE DIRECTOR

TYPE OF GIFT	FORM OF GIFT	POTENTIAL BENEFIT TO YOU – THE DONOR	BENEFIT TO FOUNDATION MINISTRIES
Outright Gift: Unrestricted	<ul style="list-style-type: none"> • Cash • Stock/Securities • Insurance • Real Estate • Personal Property, etc. 	<ul style="list-style-type: none"> • Charitable tax deduction • Avoidance of capital gains tax • Opportunity to make a gift to a designated ministry(ies) 	<ul style="list-style-type: none"> • Immediate benefit to ministry(ies) of donor choosing (or Foundation may choose)
Outright Gift: Endowment	<ul style="list-style-type: none"> • Cash • Stock/Securities • Insurance • Real Estate • Personal Property, etc. 	<ul style="list-style-type: none"> • Charitable tax deduction • Avoidance of capital gains tax • Opportunity to make a gift to a designated ministry(ies) • Honor a loved one 	<ul style="list-style-type: none"> • Ongoing support to donor designated ministry(ies) • Opportunity for beneficiaries to participate in philanthropy
Charitable Gift Annuity <i>\$10,000 minimum contribution</i>	<ul style="list-style-type: none"> • Cash • Stock/Securities 	<ul style="list-style-type: none"> • Guaranteed cash flow for life at rates higher than bank CDs • Portion of cash flow is tax-free • Charitable tax deduction plus possible reduction of taxable estate 	<ul style="list-style-type: none"> • Upon end of donor life or end of contract, remaining assets support parish, school or designated ministry(ies)
Donor Advised Fund <i>\$5,000 minimum contribution</i>	<ul style="list-style-type: none"> • Cash • Stock/Securities • Insurance 	<ul style="list-style-type: none"> • Donor recommends recipient ministries • Advice in determining appropriate ministry(ies) • Charitable tax deduction, reduction of taxable estate 	<ul style="list-style-type: none"> • The Foundation receives gift for immediate and future use • Opportunity for beneficiaries to participate in philanthropy
Charitable Remainder Trust	<ul style="list-style-type: none"> • Cash • Stock/Securities • Real Estate • Any appreciated property 	<ul style="list-style-type: none"> • Donor receives income stream • Charitable tax deduction • Reduction of taxable estate, plus avoidance of capital gains tax 	<ul style="list-style-type: none"> • Upon end of donor life, remaining trust assets support designated ministry(ies)
Bequest: In Will or Trust	<ul style="list-style-type: none"> • Cash • Stock/Securities • Personal Property, etc. • Percentage of estate • Remainder of estate 	<ul style="list-style-type: none"> • Reduction of taxable estate • Create legacy honoring a loved one • Opportunity to designate ministry(ies) 	<ul style="list-style-type: none"> • Funds designated ministry(ies) (or Foundation may choose if unrestricted)
Life Insurance	<ul style="list-style-type: none"> • Name the Foundation as policy owner and/or beneficiary 	<ul style="list-style-type: none"> • Future gift at manageable cost • Charitable tax deduction 	<ul style="list-style-type: none"> • The Foundation receives full face value of policy upon death of the donor, or current surrender value
Retirement Plan / IRA / Annuity	<ul style="list-style-type: none"> • Name the Foundation as beneficiary 	<ul style="list-style-type: none"> • Donor maintains control during life, avoids tax at death • Opportunity to designate ministry(ies) 	<ul style="list-style-type: none"> • Upon end of donor life, immediate support of Foundation ministry(ies)



IN 2014, WE WILL CONTINUE TO PROMOTE THE ONE CAMPAIGN AND ENCOURAGE ALL CATHOLICS TO SUPPORT THE BISHOP'S STRATEGIC PLAN.

DEAR FRIENDS IN CHRIST,

2013 was a year of planning and prayer as The Catholic Foundation, along with hundreds of priests and more than 1000 volunteers from more than 100 parishes, worked diligently to bring The ONE Campaign to fruition. I am grateful for your contributions as together we have embarked on a significant diocesan capital campaign to strengthen the Church in Northern California and support The Bishop's Strategic Plan.

I look forward to reporting how the financial resources from The ONE Campaign will be distributed to support the various ministries of the Church. We will share this information with you soon.

We will also support the local parishes to help them meet their financial needs. We see a need to better inform our parishioners about planned giving so that Catholics who wish to leave a legacy gift to their parish will have the information to do so. We are also looking forward to planning for the 25th year of the Annual Catholic Appeal in 2015.

Once again, I'd like to express my gratitude for your support of the works of The Catholic Foundation as we continue to support the efforts of the Church to do the Lord's work here in Northern California.

ONE in Christ,

Rick Maya
Executive Director



MISSION

To witness to Christ and His Gospel values of love, justice, forgiveness and service to all by ensuring that financial donors can effectively support the well-being of Catholic works in our diocese.

BOARD OF DIRECTORS

CHAIRMAN

Most Rev. Jaime Soto

PRESIDENT

Mr. Kelly Brothers

Partner

Genovese, Burford and Brothers

VICE PRESIDENT

Mr. Thomas C. Meuser

Chairman and CEO

El Dorado Savings Bank

TREASURER

Mr. Thomas J. McNamara

Chief Financial Officer

Diocese of Sacramento

Mr. Daniel J. Cairns CFP®, CIMA®

Senior Vice President

The Cairns & Kay Group of

R.W. Baird & Co.

Mrs. Jane A. Flynn

Owner

Pacific Farms and Orchards

Mr. Lawrence B. Garcia, Esq.

Partner

Gordon & Rees, LLC

Ms. Beth Mullen, CPA

Managing Principal

CohnReznick Group, P.C.

Rev. Msgr. James T. Murphy

Vicar General

Diocese of Sacramento

Mrs. Kathy Pescetti

President

Admail West

Mr. Terence J. Street

President

Street Consulting

SERVICES

Annual Catholic Appeal | Parish capital campaign assistance
Parish school development support | Parish stewardship resources
Planned and major giving support

STAFF

Mr. Rick Maya
Executive Director

Mrs. Chantal LeFevre
Associate Director

Mr. Abe Saadeh
Chief Development Officer

Mrs. Bianca Torres
Administrative Assistant

916.733.0266 | www.tcfsac.org

P.O. BOX 189400 | SACRAMENTO, CA 95818-9400

The Catholic Foundation of the Diocese of Sacramento, Inc. is a California Nonprofit Religious Corporation organized as a supporting organization to the Roman Catholic Bishop of Sacramento, A Corporation Sole, within the meaning of Internal Revenue Code section 509(a)(3).

