

The Catholic Foundation
of the DIOCESE of SACRAMENTO, INC.

2012
ANNUAL REPORT

GROWTH ENGAGEMENT ACTION ACCOUNTABILITY



DEAR BROTHERS AND SISTERS IN CHRIST,

I am pleased to share with you this 2012 Annual Report for The Catholic Foundation of the Diocese of Sacramento. This past year reveals God's abiding providence and the Faithful's stalwart commitment to Christ and His Church. In this Year of Faith, we have continued to put faith into action and provide for the growing needs of God's people.

I admire the earnest service of the members of The Catholic Foundation Board of Directors. They have exemplified a wise and generous Christian stewardship.

As we begin the Diocesan ONE Campaign, the talents, fervor, and treasures of the Church will build up the whole Body of Christ so together we grow in the image and likeness of our Lord Jesus.

Be assured of my prayers.

Contents

From the Executive Director	2
Milestones	3
Fund Development	4
Parish Support	5
Annual Catholic Appeal	6
Capital Campaign	7
Funds and Endowments	8-9
Audited Financial Statements	10-11
Looking Ahead / Ways to Give	12-13
Board of Directors / Staff	Back

Respectfully,

+Jaime Soto
Bishop of Sacramento

From the EXECUTIVE DIRECTOR

MILESTONES

“What identifies a steward? Safeguarding material and human resources and using them responsibly are one answer; so is generous giving of time, talent, and treasure. But being a Christian steward means more. As Christian stewards, we receive God’s gifts gratefully, cultivate them responsibly, share them lovingly in justice with others, and return them with increase to the Lord.” (USCCB 2013)



DEAR FRIENDS IN CHRIST,

It is with this spirit of stewardship in mind that I would like to express my sincere gratitude for your support of the many good works of the Diocese of Sacramento.

The Catholic Foundation exists as a trusted and experienced administrator for the disbursement of funds from donors for religious, educational and social ministries. The foundation is a witness to Christ and His Gospel values of love, justice, forgiveness and service to all by ensuring that financial donors can effectively support the well-being of Catholic works in our diocese. It provides an opportunity for you to practice your call to Christian stewardship while supporting your local Church.

As Executive Director of The Catholic Foundation of the Diocese of Sacramento, I pledge to you, our parishioners, that we will be good stewards of the gifts the Church will receive through your generosity. We will also ensure accountability and provide reporting on a regular basis so that you, the faithful, have confidence in knowing that your gifts are creating the effect we collectively desire. I ask for your trust and confidence in our ability and our commitment to do this well.

In Christ’s peace,

Rick Maya
Executive Director

The Catholic Foundation 4 MAJOR FUNCTIONS

FUND DEVELOPMENT
to support the Bishop’s Strategic Plan

PARISH SERVICES
to support financial goals at the parish level

COMMUNITY OUTREACH
to build donor, government, board and media relations

IMPACT REPORTING
to communicate results, accomplishments, and accountability

2009

The Manogue Perpetual Endowment Foundation was merged into The Catholic Foundation, creating a much larger and more robust organization.

A comprehensive parish-based *Stewardship, A Way of Living*, was developed and provided to all parishes diocese-wide.

2010

The first ever *Stewardship, A Way of Living* Conference was organized by The Catholic Foundation, which featured speakers of local and national acclaim and was attended by more than 300 clergy, religious and lay leaders.

The Catholic Foundation hosted a SUCCEED Schools celebration attended by more than 225 supporters.

2011

Participation level and financial results of the Annual Catholic Appeal continued to reach new thresholds.

Exploration of opportunities to raise capital for the implementation of the initiatives of the diocesan Strategic Plan began.

A newly-defined governance model for Catholic Schools began.

2012

Bishop Soto published a diocesan-wide Strategic Plan following a 2-year discernment process.

More than 450 people gathered for the first annual *Catholic Advantage Celebration*, a new event to recognize the many achievements of Catholic Schools in the Diocese of Sacramento.

The Annual Catholic Appeal published its first annual *Report of Gratitude* on behalf of more than 110,000 individuals and families who received desperately-needed assistance in 2012.

The *ONE Campaign* began the early stages of capital fundraising to support Bishop Soto’s Strategic Plan.



DIOCESE OF SACRAMENTO



FUND *Development*



Monsignor Edward Kavanagh headed St. Rose Parish and St. Patrick's School and Orphanage in Sacramento for more than 50 years.

The Catholic Foundation is grateful to event sponsors:

PLATINUM SPONSORS

- The Fitzpatrick Family
- Jackson Properties, Inc.
- Pacific Coast Building Products

GOLD SPONSORS

- Bank of America
- NextCloud
- Wells Fargo

SILVER SPONSORS

- California Business for Education Excellence
- CTB McGraw-Hill
- Genovese Burford & Brothers
- OfficeMax
- St. Francis High School



"The words and deeds of the Christian Brothers will echo throughout the Valley and down through the generations."



Inaugural Lifetime Achievement Awards were presented to the Christian Brothers and Monsignor Edward J. Kavanagh for longstanding contributions to our Catholic schools.

ON SEPTEMBER 8, MORE THAN 450 PEOPLE gathered for The Catholic Advantage Celebration, a new annual event to recognize the many achievements of Catholic schools and those who make them what they are today.

Proceeds from the evening, held at St. Francis High School in Sacramento, support students with the resources they need for success not only now, but in college and beyond.



THE ST. ANGELA MERICI SCHOLARSHIP FUND, A TUITION ASSISTANCE FUND THAT WILL SUPPORT CATHOLIC SCHOOL FAMILIES IN NEED WHEN DEALING WITH THE LOSS OF A PARENT OR LEGAL GUARDIAN WAS ANNOUNCED.

PARISH *Support*



IN 2011, ST. FRANCIS HIGH SCHOOL in Sacramento became the proud beneficiary of the Diocese of Sacramento's first Charitable Gift Annuity (CGA). In 2012, as a result of the addition of a Parish Support and Donor Relations Manager to Foundation staff, four new CGA gift plans were secured to benefit the following parishes and schools:

- Our Lady of Lourdes School, Colusa
- St. John Notre Dame School, Folsom
- Holy Spirit Parish, Sacramento
- Notre Dame School, Vacaville

CHARITABLE GIFT ANNUITIES OFFER DONORS OF MANY FINANCIAL LEVELS AN OPPORTUNITY TO SUPPORT THEIR LOCAL CATHOLIC COMMUNITY WHILE SUPPLEMENTING THEIR ANNUAL INCOME.

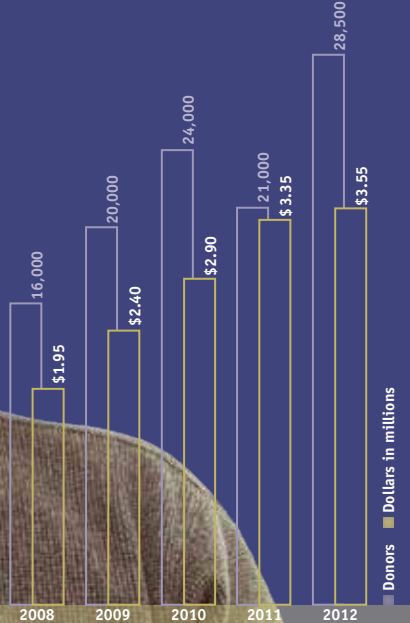


Annual CATHOLIC APPEAL



Rev. Francisco Hernandez
2012 Chair

EVERY TIME A CHILD finds safety and hope, a family has a breakthrough, a marginalized person rebuilds a life of dignity, a seminarian moves closer to ordination or a student is able to stay in Catholic school, we are thankful for the nearly 29,000 donors who committed more than \$3.5 million this year.



PARTICIPATION AND FINANCIAL RESULTS OF THE ANNUAL CATHOLIC APPEAL CONTINUE TO REACH NEW THRESHOLDS.



CAPITAL Campaign



THE MOST REVEREND BISHOP JAIME SOTO released his strategic plan, titled "A Hopeful and Effective Sacrament of Christ in Northern California" on March 6, 2012. In the plan, the bishop calls upon the Catholic people of the Diocese to:

- revitalize Catholic education
- invigorate the formation of the laity
- encourage our youth and young adults
- challenge them to serve Christ and His Church
- announce the Gospel in the public square of social media
- serve the poor and marginalized more effectively and
- harness the resources so this can all be done.

The strategic plan is an exciting and ambitious endeavor. In 2012, Bishop Soto and The Catholic Foundation began the ONE Campaign, a major capital campaign to raise a minimum \$50 million, 5 million service hours, and 5 million faith formation hours.

THE 2013 CAPITAL CAMPAIGN IS THE FINANCIAL ENGINE NECESSARY TO IMPLEMENT AND SUSTAIN THE BISHOP'S STRATEGIC PLAN. FUNDS RAISED WILL SUPPORT THE VARIOUS ENDEAVORS OF THE PLAN, WITH A PORTION GOING BACK TO EACH PARISH.

ONE CHURCH. MISSION. REVIVAL.

110,000 PEOPLE

WERE HELPED BY PROGRAMS RECEIVING FUNDS FROM THE ANNUAL CATHOLIC APPEAL.



Funds & ENDOWMENTS



CATHOLIC SCHOOLS / TUITION ASSISTANCE ENDOWMENTS

A.G. Kassis Family Scholarship Endowment for High Schools
 All Hallows Endowment, Sacramento
 Apostle of Sacred Heart of Jesus, St. Charles, Sacramento
 Believe / Catholic Schools Scholarship Endowment
 Bishop Quinn Catholic Center Endowments
 Bishop Quinn Catholic Center Alan DeTourney Music Endowment
 Bishop Quinn Catholic Center Maintenance Endowment
 Burleigh Scholarship Fund, St. Thomas More, Paradise
 Charlotte Mae Church Memorial Scholarship Fund, St. Robert School, Sacramento
 Donald W. "Bill" Littlejohn Scholarship Fund, Colusa
 Edward L. Lammerding Scholarship
 Edward & Vera Langen Scholarship Endowment
 Everett V. O'Rourke Scholarship Endowment for High Schools
 Greenleaf Scholarship Fund, St. Patrick / St. Vincent High School
 Hansen Tuition Assistance Fund, Holy Rosary School, Woodland
 Helen Faulkner Scholarship Fund, Mercy High School, Red Bluff
 Holy Cross School Endowment, West Sacramento
 Holy Family School Endowment, Citrus Heights
 Holy Rosary School Endowment, Woodland
 Holy Spirit School Endowment, Fairfield
 Holy Spirit School Endowment, Sacramento
 Ima Stoll Scholarship Trust
 Immaculate Conception School Endowment, Sacramento
 Isabel Dinelli Cristo Rey Scholarship Fund
 Isabel Dinelli Scholarship Fund
 John J. Looser Estate Scholarship
 John Robert Keane Memorial Scholarship Endowment
 Lornelle P. McKenna-Faulkner Endowment
 Mary Van Geffen Scholarship, Notre Dame, Marysville
 Maurice Dixon Scholarship Memorial Endowment for SUCCEED Schools
 Mercy High School Scholarship Endowment
 Merle A. Webb Endowment, Notre Dame School, Chico
 Mt. St. Mary School Endowment
 Mt. St. Mary School Scholarship
 Mt. St. Mary School, Single Parent Scholarship Endowment

Nancy E. Murray-Waechter Scholarship Fund, St. Thomas, Oroville
 Nellie J. Schrader Scholarship Fund
 Notre Dame School Endowment, Chico
 Notre Dame School Endowment, Marysville
 Notre Dame School Endowment, Vacaville
 Our Lady of Lourdes School Endowment, Colusa
 Our Lady of the Assumption School Endowment, Carmichael
 Presentation School Endowment, Sacramento
 Preserving our Past Building our Future Scholarship Endowment for Catholic Schools
 Preserving our Past Building our Future Scholarship Endowment for Religious Education and Lay Ministry
 Raymond J. Spingall College Scholarship Fund
 Richard & Nancy Quinn Scholarship, Notre Dame School, Vacaville
 Richard J. Lee Memorial Scholarship Fund
 Ring Scholarship Fund, Sacred Heart School, Sacramento
 Robert L. Ruffran Endowment Fund, St. Patrick/St. Vincent High School
 Rosemary Trainor Bradley Memorial Scholarship Award
 Sacred Heart School Endowment, Red Bluff
 Sacred Heart School Foundation Endowment, Sacramento
 SCORE Scholarship Endowment
 SCORE Small and Rural Schools Endowment
 St. Anne Endowment, Sacramento
 St. Basil School Endowment, Vallejo
 St. Charles School Endowment, Sacramento
 St. Dominic School Endowment, Benicia
 St. Francis High School Endowment
 St. Francis of Assisi School Endowment, Sacramento
 St. Ignatius School Endowment, Sacramento
 St. Isidore School Endowment, Yuba City
 St. James School Endowment, Davis
 St. John Notre Dame School Endowment, Folsom
 St. John the Evangelist School Endowment, Carmichael
 St. John Vianney Endowment, Rancho Cordova
 St. Joseph School Endowment, Auburn
 St. Joseph School Endowment, Redding
 St. Joseph School Endowment, Sacramento
 St. Joseph School Scholarship, Redding
 St. Lawrence Endowment, North Highlands

St. Mary's School Endowment, Sacramento
 St. Mel's School Endowments, Fair Oaks
 St. Patrick / St. Vincent High School Endowment
 St. Patrick / St. Vincent High School Memorial Scholarship Fund
 St. Peter Endowment, Sacramento
 St. Philomene School Endowment, Sacramento
 St. Robert School Endowment, Sacramento
 St. Rose School Endowment, Roseville
 St. Theresa Parish School Endowment, South Lake Tahoe
 St. Thomas More School Endowment, Oroville
 St. Thomas More Catholic Education Endowment, Paradise
 St. Vincent Ferrer School Endowment, Vallejo
 St. Vincent Ferrer School Library and Scholarship, Vallejo
 SUCCEED Schools Endowment Fund
 The Leandro and Mary Tirapelle Scholarship Fund
 Thomas & Beverly Burke Endowment Fund, St. Patrick / St. Vincent High School
 Thomas N. Burke Class of 1954, St. Basil, Vallejo
 Timothy Grover Memorial Scholarship, St. John Notre Dame School, Folsom
 Vliet Scholarship Endowment for College
 William Randolph Hearst Small and Rural School Endowment

PARISH ENDOWMENTS

Fr. Michael J. Dillon Scholarship, Rocklin
 Garland and Veronica Frizzie Endowment, St. Joseph Parish, Sacramento
 Mary B. Allen Trust Endowment, Sacred Heart Parish, Gridley
 Marya Welch-Memorial Hall Endowment, St. James Parish, Davis
 Richard Lambert Trust, St. John the Baptist Parish, Chico
 Sacred Heart Parish Endowment, Red Bluff
 St. Francis of Assisi Parish Endowment, Sacramento
 St. James Parish Endowment, Davis
 St. Joseph Parish Endowment, Elk Grove
 St. Rose Parish Education Endowment, Roseville
 St. Therese Parish Endowment, Isleton
 St. Vincent Ferrer Parish Endowment, Vallejo
 William and Marijane Adams Endowment, Queen of the Snows Parish, Tahoe City

VOCATIONS ENDOWMENTS

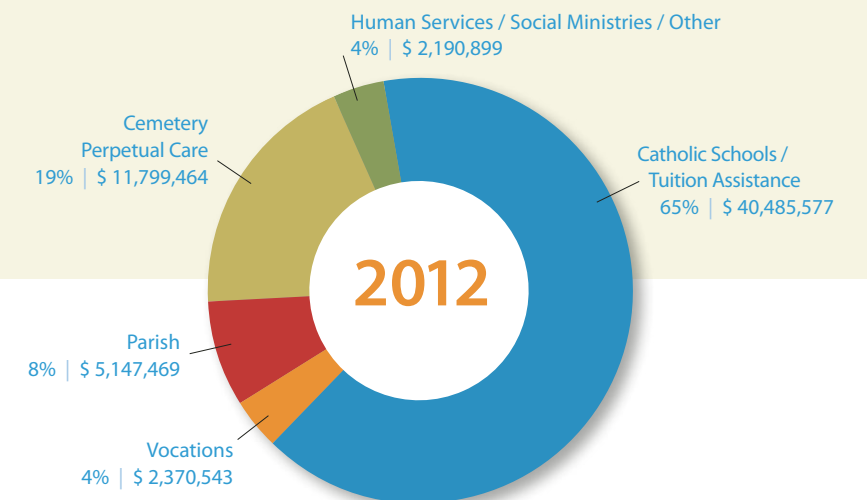
Bishop William K. Weigand Seminarian Endowment
 Catherine and Patrick Dunning Memorial Fund
 Cottle Endowment
 Fred W. Lammerding Seminarian Education Endowment
 Helen R. Hogan Seminarian Education Endowment
 Holy Family Parish Religious Vocations Endowment
 Joe and Edna Fisher Seminarian Endowment
 Mary Luddy Seminarian Education Endowment
 Preserving our Past Building our Future Scholarship Endowment for Seminarian Education
 Priestly Vocations Endowment
 William H. Farrell Seminarian Endowment

HUMAN SERVICES/SOCIAL MINISTRIES/ OTHER

Camp ReCreation Endowment
 Helena St. Louis Endowment
 Oxnard Sprague Mass Intentions Endowment
 Poverello Endowment for Social Programs
 Preserving Our Past, Building Our Future Social Services Endowment
 The Meuser Family Donor Advised Fund
 The Social Services Fund

CEMETERY PERPETUAL CARE FUNDS

Department of Cemeteries Endowment Fund
 Department of Cemeteries Veterans Endowment Fund
 St. Joseph's Cemetery, Redding
 St. Patrick's Cemetery, Placerville



Audited FINANCIAL STATEMENTS

YEARS ENDED DECEMBER 31, 2012 & 2011



FINANCIAL POSITION

ASSETS	2012		2011	
Current Assets:				
Cash and Cash Equivalents	\$	264,255	\$	173,885
Accounts Receivable		2,750		—
Total Current Assets		267,005		173,885
Investments		61,849,484		57,883,143
Total Assets	\$	62,116,489	\$	58,057,028
LIABILITIES AND NET ASSETS				
		2012		2011
Current Liabilities:				
Accounts Payable	\$	109,426	\$	100,740
Other liabilities		13,106		—
Total Current Liabilities		122,532		100,740
Long-term Liabilities:				
Endowments Held for Others		53,263,941		49,836,687
Total Liabilities		53,386,473		49,937,427
Net Assets:				
Temporarily Restricted		1,205,878		713,363
Permanently Restricted		7,524,138		7,406,238
Total Net Assets		8,730,016		8,119,601
Total Liabilities and Net Assets	\$	62,116,489	\$	58,057,028

ACTIVITIES

2012	2012			2011	
	Unrestricted	Temporarily Restricted	Permanently Restricted	Total	Total
Revenue and Reclassifications:					
Endowment Contributions	\$ —	\$ —	\$ 70,900	\$ 70,900	\$ 10,965
Other Contributions	—	80,254	—	80,254	12,500
Net Investment Income	—	846,576	47,000	893,576	245,946
Management Fee Revenue	368,121	—	—	368,121	350,121
Net Assets Released from Restrictions	434,315	(434,315)	—	—	—
Total Revenue and Reclassifications	802,436	(492,515)	117,900	1,412,851	619,532
Expenses:					
Administrative and Financial Services Fee	426,486	—	—	426,486	407,334
Distributions and Grants	375,950	—	—	375,950	316,600
Total Expenses	802,436	—	—	802,436	723,934
Change In Net Assets	—	492,515	117,900	610,415	(104,402)
Net Assets, Beginning of Year	—	713,363	7,406,238	8,119,601	8,224,003
Net Assets, End of Year	\$ —	\$ 1,205,878	\$ 7,524,138	\$ 8,730,016	\$ 8,119,601

TARGET ASSET ALLOCATION





AS WE LOOK TO IMPLEMENT THE BISHOP'S STRATEGIC PLAN, an essential element will be the expansion and enhancement of the Foundation's assets so that it can support the pastoral goals of Catholic Education, Lay Formation, Youth Ministry, Vocations, Charities, as well as other worthwhile pastoral endeavors.

VISION

The Catholic Foundation will serve as a dynamic catalyst for bringing together the essential financial resources to build and sustain, for present and future generations, the Catholic Church's work in catholic education, lay formation, youth and young adult ministry, vocations and charity.

THE CATHOLIC FOUNDATION ACTION STEPS

- continue to promote and develop the practice of stewardship as part of faithful Christian discipleship
- together with the Office of Social Ministries, continue to grow the potential of the Annual Catholic Appeal to support the growth and expansion of services needed by at-risk families in our communities
- promote the availability of planned giving instruments and other opportunities for supporting the works of the Foundation
- work with Bishop Soto to conduct a Diocesan Capital Campaign in 2013. The Campaign will primarily strengthen existing endowments and establish new endowments to support Catholic education and youth and young adult ministry. It will also support other initiatives proposed in the strategic plan

Details available at www.diocese-sacramento.org/diocese/pdfs/DiocesanStrategicPlanEnglish.pdf

TYPE OF GIFT	FORM OF GIFT	BENEFIT TO YOU — THE DONOR	BENEFIT TO FOUNDATION MINISTRIES
Outright Gift: Unrestricted	<ul style="list-style-type: none"> • Cash • Stock/Securities • Insurance • Real Estate • Personal Property, etc. 	<ul style="list-style-type: none"> • Charitable tax deduction • Avoidance of capital gains tax • Opportunity to make a gift to a designated ministry(ies) 	<ul style="list-style-type: none"> • Immediate benefit to ministry(ies) of donor choosing (or Foundation may choose)
Outright Gift: Endowment	<ul style="list-style-type: none"> • Cash • Stock/Securities • Insurance • Real Estate • Personal Property, etc. 	<ul style="list-style-type: none"> • Charitable tax deduction • Avoidance of capital gains tax • Opportunity to make a gift to a designated ministry(ies) • Honor a loved one 	<ul style="list-style-type: none"> • Ongoing support to donor designated ministry(ies) • Opportunity for heirs to participate in philanthropy
Charitable Gift Annuity	<ul style="list-style-type: none"> • Cash • Stock/Securities 	<ul style="list-style-type: none"> • Guaranteed income for life at rates higher than bank CDs • Portion of income is tax-free • Charitable income tax deduction plus possible reduction of taxable estate 	<ul style="list-style-type: none"> • Upon end of donor life or end of contract, remaining assets support parish, school or designated ministry(ies)
Donor Advised Fund	<ul style="list-style-type: none"> • Cash • Stock/Securities • Insurance 	<ul style="list-style-type: none"> • Donor recommends recipient ministries • Advice in determining appropriate ministry(ies) • Charitable tax deduction, possible reduction of taxable estate 	<ul style="list-style-type: none"> • The Foundation receives gift for immediate and future use • Opportunity for heirs to participate in philanthropy
Charitable Remainder Trust	<ul style="list-style-type: none"> • Cash • Stock/Securities • Real Estate • Any appreciated property 	<ul style="list-style-type: none"> • Donor receives income stream • Charitable tax deduction • Possible reduction of taxable estate, plus avoidance of capital gains tax 	<ul style="list-style-type: none"> • Upon end of donor life, remaining trust assets support designated ministry(ies)
Bequest: In Will or Trust	<ul style="list-style-type: none"> • Cash • Stock/Securities • Personal Property, etc. • Percentage of estate • Remainder of estate 	<ul style="list-style-type: none"> • Possible reduction of taxable estate • Create legacy honoring a loved one • Opportunity to designate ministry(ies) 	<ul style="list-style-type: none"> • Funds designated ministry(ies) (or by Foundation if unrestricted)
Life Insurance	<ul style="list-style-type: none"> • Name the Foundation as policy owner and/or beneficiary 	<ul style="list-style-type: none"> • Future gift at manageable cost • Charitable tax deduction 	<ul style="list-style-type: none"> • The Foundation receives full face value of policy upon death of the donor, or current surrender value
Retirement Plan / IRA / Annuity	<ul style="list-style-type: none"> • Name the Foundation as beneficiary 	<ul style="list-style-type: none"> • Donor maintains control during life, avoids tax at death • Opportunity to designate ministry(ies) 	<ul style="list-style-type: none"> • Upon end of donor life, immediate support of Foundation ministry(ies)



THE FOUNDATION WELCOMES THE OPPORTUNITY TO WORK WITH DONORS AND THEIR PROFESSIONAL ADVISORS TO ACHIEVE THEIR INDIVIDUAL PHILANTHROPIC GOALS.

The Catholic Foundation

of the DIOCESE of SACRAMENTO, INC.

BOARD OF DIRECTORS

CHAIRMAN

Most Rev. Jaime Soto

PRESIDENT

Mr. Kelly Brothers

Partner

Genovese, Burford and Brothers

VICE PRESIDENT

Mr. Thomas C. Meuser

Chairman and CEO

El Dorado Savings Bank

TREASURER

Mr. Thomas J. McNamara

Chief Financial Officer

Diocese of Sacramento

Mr. Daniel J. Cairns CFP®, CIMA®

Senior Vice President

The Cairns & Kay Group of

R.W. Baird & Co.

Mrs. Jane A. Flynn

Owner

Pacific Farms and Orchards

Mr. Lawrence B. Garcia, Esq.

Partner

Gordon & Rees, LLC

Rev. Msgr. James C. Kidder

Pastor, Holy Trinity Parish

El Dorado Hills

Ms. Beth Mullen, CPA

Managing Principal

CohnReznick Group, P.C.

Rev. Msgr. James T. Murphy

Vicar General

Diocese of Sacramento

Mrs. Kathy Pescetti

President

Admail West

Mr. Terence J. Street

President

Street Consulting

STAFF

Mr. Rick Maya

Executive Director

Mrs. Chantal LeFevre

Associate Director

Ms. Christine Tinsay

Administrative Assistant

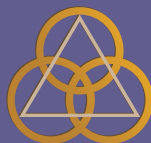
MISSION

To witness to Christ and His Gospel values of love, justice, forgiveness and service to all by ensuring that financial donors can effectively support the well-being of Catholic works in our diocese.

SERVICES

Parish stewardship resources | Annual Catholic Appeal | Planned and major giving support
Parish capital campaign assistance | Parish school development support

916.733.0266 | www.tcfsac.org



P.O. BOX 189400 | SACRAMENTO, CA 95818-9400

The Catholic Foundation of the Diocese of Sacramento, Inc. is a California Nonprofit Religious Corporation organized as a supporting organization to the Roman Catholic Bishop of Sacramento, A Corporation Sole, within the meaning of Internal Revenue Code section 509(a)(3).

