



The Catholic Foundation
of the DIOCESE of SACRAMENTO, INC.



2011 ANNUAL REPORT

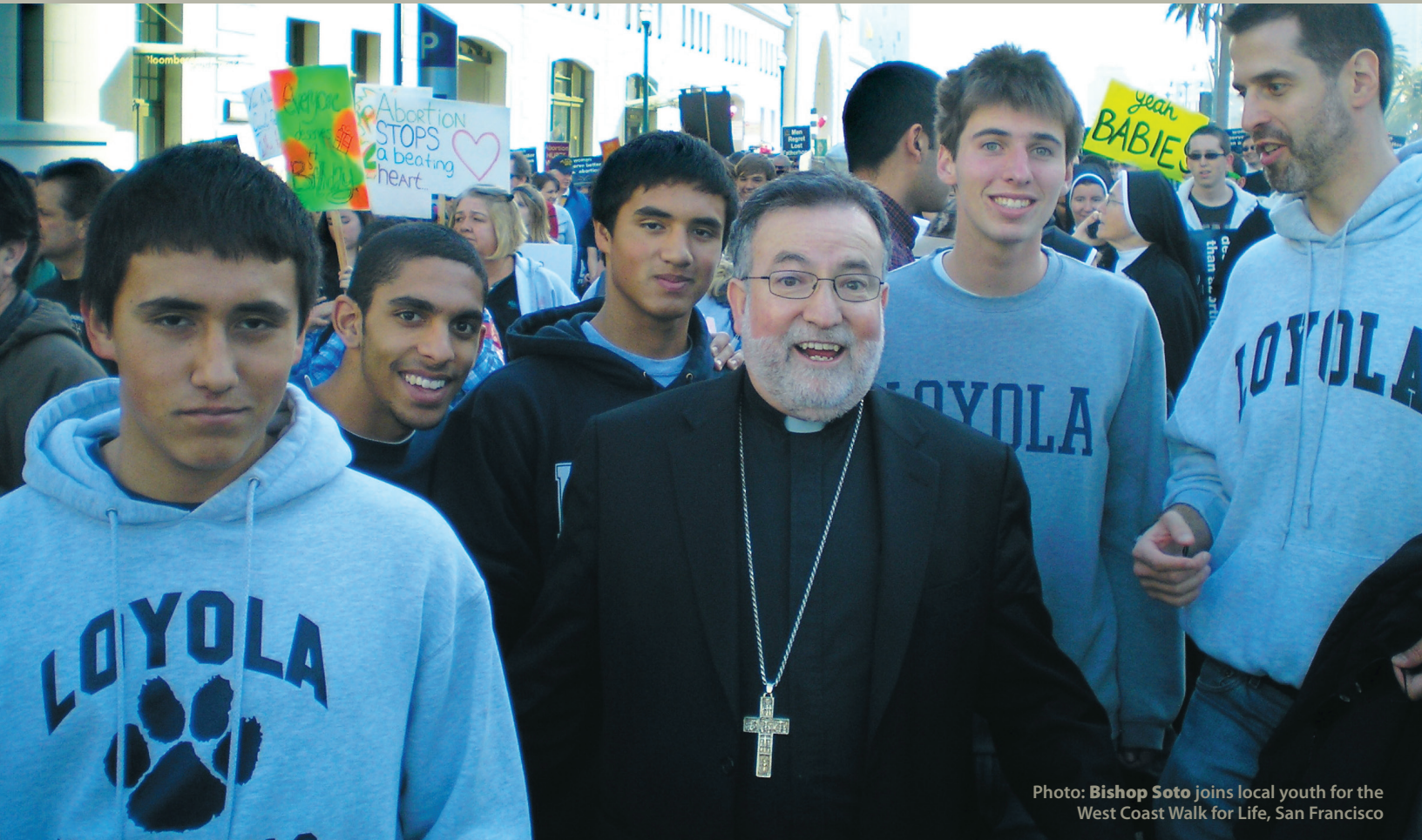


Photo: **Bishop Soto** joins local youth for the West Coast Walk for Life, San Francisco

Bishop's message

DEAR BROTHERS AND SISTERS IN CHRIST,

I am pleased to share with you the 2011 Annual Report for The Catholic Foundation of the Diocese of Sacramento. This report provides an overview of the careful and respectful stewardship provided by the Foundation Board, staff and me. We recognize the generous sacrifices these resources represent as well as the profound trust with which they are given. My co-workers and I reverence the sacred bond we share with all of you. Together, we are furthering the work of the Lord Jesus and His Church in the vast, diverse Diocese of Sacramento.

May the wisdom and charity of the Lord Jesus continue to be our inspiration and guide. Be assured of my abiding admiration and prayers.

Respectfully,

+Jaime Soto
Bishop of Sacramento

Our Mission

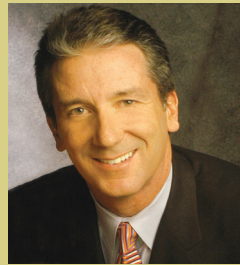
To witness to Christ and His Gospel values of love, justice, forgiveness and service to all by ensuring that financial donors can effectively support the well-being of Catholic works in our diocese.

Contents

From the president	2
Living the Catholic faith	3
Endowments	4
Financial statements	6
Methods of giving	8
Board of Directors	10



From the President



DEAR FRIENDS,

It is a great honor and privilege to serve Bishop Soto as the President of the Catholic Foundation. Thanks to the outstanding support put forth by the Board of Directors and Sacramento Diocese staff, The Foundation has grown in its capacity and capability to serve you and your local Catholic community. All of us involved with The Catholic Foundation are proud of and committed to supporting the parishes, schools, ministries and donors of the Diocese of Sacramento.

We are fortunate to have Bishop Soto, an effective and charismatic leader who has a true vision for Catholics in the Sacramento Diocese. He understands and respects tradition, but is not afraid to boldly go in new directions when circumstances warrant. We are also blessed with an excellent diocesan staff.

Rest assured that we take our roles seriously and are dedicated to supporting the ministries of the Church. We must be good stewards of the resources you provide to further His work here on earth. Thank you.

Kelly Brothers
President, Board of Directors
The Catholic Foundation of the Diocese of Sacramento

2011 Areas of Progress

Continuing to increase the participation level and financial results of the Annual Catholic Appeal

Bishop Soto's publishing of a Diocesan-Wide Strategic Plan

Exploration of opportunities to raise capital for the financial resources necessary to implement the initiatives of the Strategic Plan

Beginning the implementation of a newly defined governance model for Catholic schools.

A CHARITABLE GIFT ANNUITY BENEFITTING ST. FRANCIS HIGH SCHOOL

In 2011, St. Francis High School in Sacramento became the proud beneficiary of the Diocese of Sacramento's first Charitable Gift Annuity (CGA). William G. Hegg believes

“ THE FAITH-BASED EDUCATION THAT ST. FRANCIS HIGH SCHOOL PROVIDES IS CREATING WOMEN LEADERS OF TOMORROW. ”

So inspired, he increased his charitable investing to the community through a \$100,000 CGA. Bill believes CGAs are a sound investing tool which provides donors of many different financial levels an opportunity to support their local Catholic Community while supplementing their annual income.

THE MEUSER FAMILY DONOR ADVISED FUND

Tom and Jane Meuser wanted a way to give back and include their large family in the spirit of giving to causes close to their heart. With years of expertise in finance, Tom came to The Catholic Foundation to start the first Donor Advised Fund.

“ JANE AND I APPRECIATE THE STRUCTURE OF THE DONOR ADVISED FUND. IT ALLOWS US TO BUILD OUR FUND OVER TIME AND INVOLVE OUR FAMILY IN DECIDING HOW WE WILL SUPPORT CATHOLIC ORGANIZATIONS IN THE DIOCESE. ”

Tom and Jane believe in giving back the many blessings God has given them and the Fund allows them to do just that.

CATHOLIC SCHOOLS / TUITION ASSISTANCE ENDOWMENTS

A.G. Kassis Family Scholarship Endowment for High Schools
 All Hallows Endowment, Sacramento
 Apostle of Sacred Heart of Jesus, St. Charles, Sacramento
 Believe / Catholic Schools Scholarship Endowment
 Bishop Quinn Catholic Center Endowments
 Bishop Quinn Catholic Center Alan DeTourney Music Endowment
 Bishop Quinn Catholic Center Maintenance Endowment
 Burleigh Scholarship Fund, St. Thomas More, Paradise
 Charlotte Mae Church Memorial Scholarship Fund, St. Robert School, Sacramento
 Donald W. "Bill" Littlejohn Scholarship Fund, Colusa
 Edward L. Lammerding Scholarship
 Edward & Vera Langen Scholarship Endowment
 Everett V. O'Rourke Scholarship Endowment for High Schools
 Greenleaf Scholarship Fund, St. Patrick / St. Vincent High School
 Hansen Tuition Assistance Fund, Holy Rosary School, Woodland
 Helen Faulkner Scholarship Fund, Mercy High School, Red Bluff
 Holy Cross School Endowment, West Sacramento
 Holy Family School Endowment, Citrus Heights
 Holy Rosary School Endowment, Woodland
 Holy Spirit School Endowment, Fairfield
 Holy Spirit School Endowment, Sacramento
 Ima Stoll Scholarship Trust
 Immaculate Conception School Endowment, Sacramento
 Isabel Dinelli Cristo Rey Scholarship Fund
 Isabel Dinelli Scholarship Fund
 John J. Looser Estate Scholarship
 John Robert Keane Memorial Scholarship Endowment
 Lornelle P. McKenna-Faulkner Endowment
 Mary Van Geffen Scholarship, Notre Dame, Marysville
 Maurice Dixon Scholarship Memorial Endowment for SUCCEED Schools
 Mercy High School Scholarship Endowment
 Merle A. Webb Endowment, Notre Dame School, Chico
 Mt. St. Mary School Endowment
 Mt. St. Mary School Scholarship
 Mt. St. Mary School, Single Parent Scholarship Endowment
 Nancy E. Murray-Waechter Scholarship Fund, St. Thomas, Oroville
 Nellie J. Schrader Scholarship Fund
 Notre Dame School Endowment, Chico
 Notre Dame School Endowment, Marysville
 Notre Dame School Endowment, Vacaville
 Our Lady of Lourdes School Endowment, Colusa
 Our Lady of the Assumption School Endowment, Carmichael
 Presentation School Endowment, Sacramento
 Preserving our Past Building our Future Scholarship Endowment for Catholic Schools
 Preserving our Past Building our Future Scholarship Endowment for Religious Education and Lay Ministry

Raymond J. Spingall College Scholarship Fund
 Richard & Nancy Quinn Scholarship, Notre Dame School, Vacaville
 Richard J. Lee Memorial Scholarship Fund
 Ring Scholarship Fund, Sacred Heart School, Sacramento
 Robert L. Rufran Endowment Fund, St. Patrick/St. Vincent High School
 Rosemary Trainor Bradley Memorial Scholarship Award
 Sacred Heart School Endowment, Red Bluff
 Sacred Heart School Foundation Endowment, Sacramento
 SCORE Scholarship Endowment
 SCORE Small and Rural Schools Endowment
 St. Anne Endowment, Sacramento
 St. Basil School Endowment, Vallejo
 St. Charles School Endowment, Sacramento
 St. Dominic School Endowment, Benicia
 St. Francis High School Endowment
 St. Francis of Assisi School Endowment, Sacramento
 St. Ignatius School Endowment, Sacramento
 St. Isidore School Endowment, Yuba City
 St. James School Endowment, Davis
 St. John Notre Dame School Endowment, Folsom
 St. John the Evangelist School Endowment, Carmichael
 St. John Vianney Endowment, Rancho Cordova
 St. Joseph School Endowment, Auburn
 St. Joseph School Endowment, Redding
 St. Joseph School Endowment, Sacramento
 St. Joseph School Scholarship, Redding
 St. Lawrence Endowment, North Highlands
 St. Mary's School Endowment, Sacramento
 St. Mel's School Endowments, Fair Oaks
 St. Patrick / St. Vincent High School Endowment
 St. Patrick / St. Vincent High School Memorial Scholarship Fund
 St. Peter Endowment, Sacramento
 St. Philomene School Endowment, Sacramento
 St. Robert School Endowment, Sacramento
 St. Rose School Endowment, Roseville
 St. Theresa Parish School Endowment, South Lake Tahoe
 St. Thomas More School Endowment, Oroville
 St. Thomas More Catholic Education Endowment, Paradise
 St. Vincent Ferrer School Endowment, Vallejo
 St. Vincent Ferrer School Library and Scholarship, Vallejo
 SUCCEED Schools Endowment Fund
 The Leandro and Mary Tirapelle Scholarship Fund
 Thomas & Beverly Burke Endowment Fund, St. Patrick / St. Vincent High School
 Thomas N. Burke Class of 1954, St. Basil, Vallejo
 Timothy Grover Memorial Scholarship, St. John Notre Dame School, Folsom
 Vliet Scholarship Endowment for College
 William Randolph Hearst Small and Rural School Endowment

PARISH ENDOWMENTS

Fr. Michael J. Dillon Scholarship, Rocklin
 Garland and Veronica Frizzie Endowment, St. Joseph Parish, Sacramento
 Mary B. Allen Trust Endowment, Sacred Heart Parish, Gridley
 Marya Welch-Memorial Hall Endowment, St. James Parish, Davis
 Richard Lambert Trust, St. John the Baptist Parish, Chico
 Sacred Heart Parish Endowment, Red Bluff
 St. Francis of Assisi Parish Endowment, Sacramento
 St. James Parish Endowment, Davis
 St. Joseph Parish Endowment, Elk Grove
 St. Rose Parish Education Endowment, Roseville
 St. Therese Parish Endowment, Isleton
 St. Vincent Ferrer Parish Endowment, Vallejo
 William and Marijane Adams Endowment, Queen of the Snows Parish, Tahoe City

VOCATIONS ENDOWMENTS

Bishop William K. Weigand Seminarian Endowment
 Catherine and Patrick Dunning Memorial Fund
 Cottle Endowment
 Fred W. Lammerding Seminarian Education Endowment
 Helen R. Hogan Seminarian Education Endowment
 Holy Family Parish Religious Vocations Endowment
 Joe and Edna Fisher Seminarian Endowment
 Mary Luddy Seminarian Education Endowment
 Preserving our Past Building our Future Scholarship Endowment for Seminarian Education
 Priestly Vocations Endowment
 William H. Farrell Seminarian Endowment

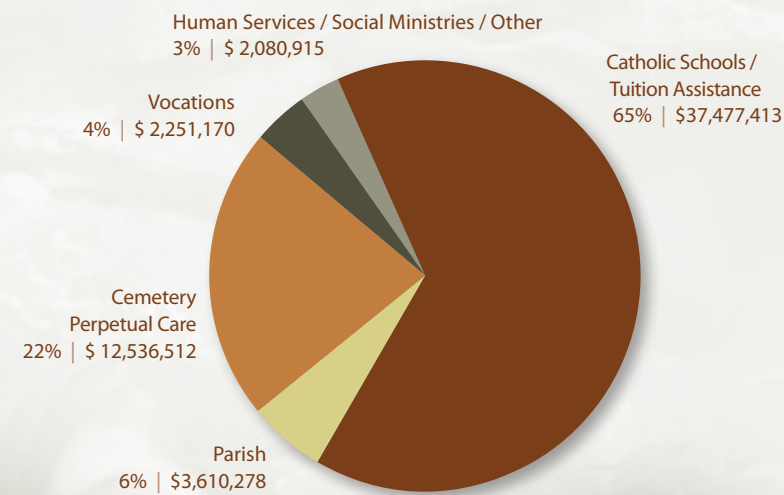
CEMETERY PERPETUAL CARE FUNDS

Department of Cemeteries Endowment Fund
 Department of Cemeteries Veterans Endowment Fund
 St. Joseph's Cemetery, Redding
 St. Patrick's Cemetery, Placerville

HUMAN SERVICES/SOCIAL MINISTRIES/OTHER

Camp ReCreation Endowment
 Helena St. Louis Endowment
 Oxnard Sprague Mass Intentions Endowment
 Poverello Endowment for Social Programs
 Preserving our Past Building our Future Social Services Endowment
 The Meuser Family Donor Advised Fund
 The Social Services Fund

By Purpose



INDIVIDUALS PRACTICE
 THEIR CALL TO CHRISTIAN
 STEWARDSHIP AND SUPPORT
 THEIR LOCAL CHURCH
 THROUGH ENDOWMENTS
 ESTABLISHED WITH
 THE CATHOLIC FOUNDATION.

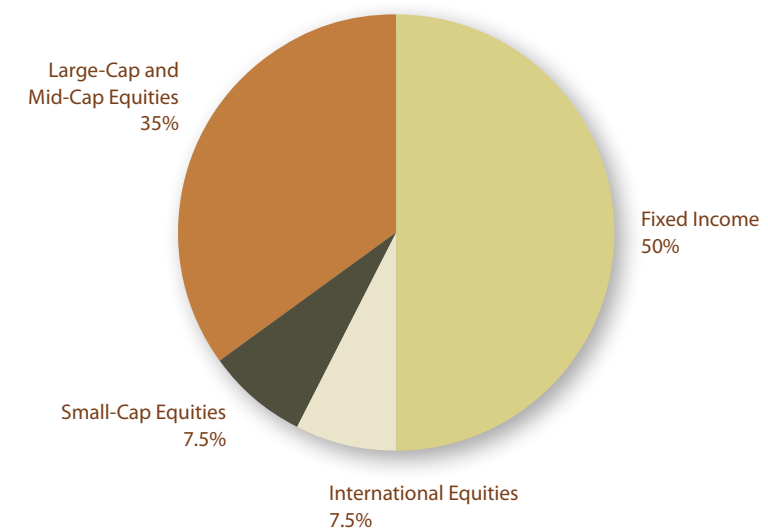
Financial Position

ASSETS		
	2011	2010
Current Assets:		
Cash and Cash Equivalents	\$ 173,885	\$ 219,912
Accounts Receivable	—	117
Interest Receivable	—	1,253
Total Current Assets	173,885	221,282
Investments	57,883,143	61,856,887
Total Assets	\$ 58,057,028	\$ 62,078,169
LIABILITIES AND NET ASSETS		
	2011	2010
Current Liabilities:		
Accounts Payable	\$ 100,740	\$ 93,867
Long-term Liabilities:		
Endowments Held for Others	49,836,687	53,760,299
Total Liabilities	49,937,427	53,854,166
Net Assets (Deficit):		
Unrestricted	—	(2,954)
Temporarily Restricted	713,363	831,684
Permanently Restricted	7,406,238	7,395,273
Total Net Assets	8,119,601	8,224,003
Total Liabilities and Net Assets	\$ 58,057,028	\$ 62,078,169

Activities

	2011				2010
	Unrestricted	Temporarily Restricted	Permanently Restricted	Total	Total
Revenue and Reclassifications:					
Endowment Contributions	\$ —	\$ —	\$ 10,965	\$ 10,965	\$ 552,850
Other Contributions	—	12,500	—	12,500	12,500
Net Investment Income	—	245,946	—	245,946	871,034
Net Assets Released from Restrictions	373,813	(373,813)	—	—	—
Reclassifications	2,954	(2,954)	—	—	—
Total Revenue and Reclassifications	376,767	(118,321)	10,965	269,411	1,436,384
Expenses:					
Administrative and Financial Services Fee	57,213	—	—	57,213	49,690
Distributions and Grants	316,600	—	—	316,600	7,500
Total Expenses	373,813	—	—	373,813	57,190
Change In Net Assets	2,954	(118,321)	10,965	(104,402)	1,379,194
Net Assets, Beginning of Year	(2,954)	831,684	7,395,273	8,224,003	6,844,809
Net Assets, End of Year	\$ —	\$ 713,363	\$ 7,406,238	\$ 8,119,601	\$ 8,224,003

Target Asset Allocation





The Catholic Foundation
of the DIOCESE of SACRAMENTO, INC.

Vision

~ To serve as a ~

FORWARD-THINKING CATALYST
in the shaping of effective and appropriate
responses to challenges and opportunities.

ENTRUSTED & EXPERIENCED
CENTRAL ADMINISTRATOR
for the disbursement of funds from donors
of varied ministerial interests and abilities to give.

DEDICATED COMMUNITY PARTNER
in fostering and providing financial support for
religious, educational and social ministries.

HIGHLY VISIBLE RESOURCE
for the preservation of the Gospel values of
love, justice, forgiveness, and service to all.

~ In support of ~

YOUTH ADVANCEMENT
LIVING THE CATHOLIC FAITH
SERVING PEOPLE IN NEED
ENCOURAGING VOCATIONS

Methods of Giving

THE FOUNDATION WELCOMES THE
OPPORTUNITY TO WORK WITH DONORS
AND THEIR PROFESSIONAL ADVISORS
TO ACHIEVE THEIR INDIVIDUAL
PHILANTHROPIC GOALS.

Gifts may be made to an existing endowed fund or parishes, individuals, families, agencies, schools or businesses can create a new endowment fund. Funds may be named in memory or honor of a family member, friend or loved one — or remain anonymous when privacy is desired. A wide variety of methods of giving are available to assist donors in establishing a legacy of faith.

TYPE OF GIFT	FORM OF GIFT	BENEFIT TO YOU - THE DONOR	BENEFIT TO FOUNDATION MINISTRIES
Outright Gift: Unrestricted	<ul style="list-style-type: none"> • Cash • Stock/Securities • Insurance • Real Estate • Personal Property, etc. 	<ul style="list-style-type: none"> • Charitable tax deduction • Avoidance of capital gains tax • Opportunity to make a gift to a designated ministry(ies) 	<ul style="list-style-type: none"> • Immediate benefit to ministry(ies) of donor choosing (or Foundation may choose)
Outright Gift: Endowment	<ul style="list-style-type: none"> • Cash • Stock/Securities • Insurance • Real Estate • Personal Property, etc. 	<ul style="list-style-type: none"> • Charitable tax deduction • Avoidance of capital gains tax • Opportunity to make a gift to a designated ministry(ies) • Honor a loved one 	<ul style="list-style-type: none"> • Ongoing support to donor designated ministry(ies) • Opportunity for heirs to participate in philanthropy
Charitable Gift Annuity	<ul style="list-style-type: none"> • Cash • Stock/Securities 	<ul style="list-style-type: none"> • Guaranteed income for life at rates higher than bank CDs • Portion of income is tax-free • Charitable income tax deduction plus possible reduction of taxable estate 	<ul style="list-style-type: none"> • Upon end of donor life or end of contract, remaining assets support parish, school or designated ministry(ies)
Donor Advised Fund	<ul style="list-style-type: none"> • Cash • Stock/Securities • Insurance 	<ul style="list-style-type: none"> • Donor recommends recipient ministries • Advice in determining appropriate ministry(ies) • Charitable tax deduction, possible reduction of taxable estate 	<ul style="list-style-type: none"> • The Foundation receives gift for immediate and future use • Opportunity for heirs to participate in philanthropy
Charitable Remainder Trust	<ul style="list-style-type: none"> • Cash • Stock/Securities • Real Estate • Any appreciated property 	<ul style="list-style-type: none"> • Donor receives income stream • Charitable tax deduction • Possible reduction of taxable estate, plus avoidance of capital gains tax 	<ul style="list-style-type: none"> • Upon end of donor life, remaining trust assets support designated ministry(ies)
Bequest: In Will or Trust	<ul style="list-style-type: none"> • Cash • Stock/Securities • Personal Property, etc. • Percentage of estate • Remainder of estate 	<ul style="list-style-type: none"> • Possible reduction of taxable estate • Create legacy honoring a loved one • Opportunity to designate ministry(ies) 	<ul style="list-style-type: none"> • Funds designated ministry(ies) (or by Foundation if unrestricted)
Life Insurance	<ul style="list-style-type: none"> • Name the Foundation as policy owner and/or beneficiary 	<ul style="list-style-type: none"> • Future gift at manageable cost • Charitable tax deduction 	<ul style="list-style-type: none"> • The Foundation receives full face value of policy upon death of the donor, or current surrender value
Retirement Plan / IRA / Annuity	<ul style="list-style-type: none"> • Name the Foundation as beneficiary 	<ul style="list-style-type: none"> • Donor maintains control during life, avoids tax at death • Opportunity to designate ministry(ies) 	<ul style="list-style-type: none"> • Upon end of donor life, immediate support of Foundation ministry(ies)

The Catholic Foundation
of the DIOCESE of SACRAMENTO, INC.

Board of Directors

CHAIRMAN

Most Rev. Jaime Soto

PRESIDENT

Mr. Kelly Brothers

Partner, Genovese, Burford and Brothers

VICE PRESIDENT

Mr. Thomas C. Meuser

Chairman and CEO, El Dorado Savings Bank

TREASURER

Mr. Thomas J. McNamara

Chief Financial Officer, Diocese of Sacramento

Mr. Daniel J. Cairns CFP®, CIMA®
Senior Vice President, The Cairns & Kay
Group of R.W. Baird & Co.

Mrs. Jane A. Flynn

Owner, Pacific Farms and Orchards

Mr. Lawrence B. Garcia, Esq.

Partner, Gordon & Rees, LLC

Rev. Msgr. James C. Kidder

Pastor, Holy Trinity Parish, El Dorado Hills

Ms. Beth Mullen, CPA

Managing Principal, Reznick Group, P.C.

Rev. Msgr. James T. Murphy

Vicar General, Diocese of Sacramento

Mrs. Kathy Pescetti

President, Admail West

Mr. Terence J. Street

President, Street Consulting

Staff

Mr. Rick Maya
Executive Director

Mrs. Chantal LeFevre
Associate Director

Mrs. Melanie Torres
Parish Support & Donor
Relations Manager

Ms. Christine Tinsay
Administrative Assistant

Services

Parish stewardship resources | Annual Catholic Appeal | Planned and major giving support
Parish capital campaign assistance | Parish school development support

916.733.0266 | www.tcfsac.org

P.O. BOX 189400 | SACRAMENTO, CA 95818-9400

The Catholic Foundation of the Diocese of Sacramento, Inc. is a California Nonprofit Religious Corporation organized as a supporting organization to the Roman Catholic Bishop of Sacramento, A Corporation Sole, within the meaning of Internal Revenue Code section 509(a)(3).